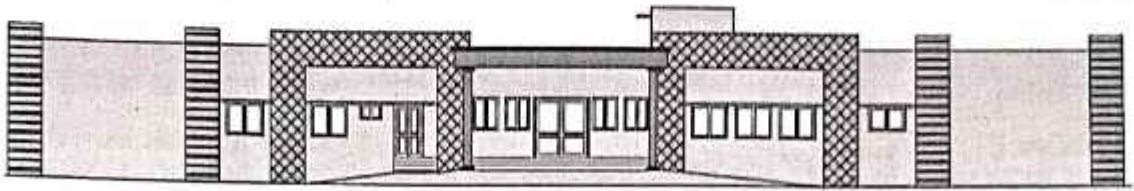


PROPOSAL

For

ASHRAM BHAVAN

કો સીમા આદિવાસી કન્યા ઓફિસ ડોલો મન નિર્માણ કાર્ય
વિ. ૨૦૧૦ સંસ્કૃત સમનાર નિલ્લ- રામગઢ



For

**DEPTT. OF TRIBAL DEVELOPMENT,
RAIPUR, C. G.**

Prepared by

BHARTI & ASSOCIATES

NEAR LEFWORTH HOSPITAL,
SAMTA COLONY, RAIPUR, C.G.

CELL - 94252 14343

MAIL - upadhyaybharti@yahoo.com

50-सीएम-आदिवासी कल्याण अभियान जोड़ी गंगा मिशन कार्य
दि 29/03/2023 तमनार जिला रायपुर

SUMMARY OF ESTIMATE			
FOR 50 BED ASHRAM BHAVAN			
FOR TRIBAL DEVELOPMENT DEPARTMENT			
1	BUILDING WORKS	Rs.	12452000.00
2	SANITARY & WATER SUPPLY	Rs.	655000.00
3	ELECTRIFICATION	Rs.	911000.00
4	SEPTIC TANK	Rs.	61000.00
5	BORE WELL	Rs.	71000.00
6	SUBMERSIBLE PUMP	Rs.	83000.00
7	SUMP WELL	Rs.	84000.00
8	RAIN WATER HARVESTING	Rs.	48000.00
9	CHAUKIDAR QUARTER	Rs.	334000.00
10	BOUNDARY WALL	Rs.	1163000.00
11	DRAIN	Rs.	162000.00
12	ENTRANCE ROAD	Rs.	152000.00
14	SITE DEVELOPMENT (Flower beds, horticulture, etc.) L/S	Rs.	50000.00
SUB-TOTAL		Rs.	16226000.00
Add for Contingencies		Rs.	50000.00
GRAND TOTAL		Rs.	16276000.00
SAY		Rs.	162.76 Lakh

T.S. No. 101/26-27 Date 12/05/2023

Technically Sanction Rs. 162,76,000.00

In Words Rs. One crore sixty two lakhs seventy six thousand only

Name of Work Detailed estimate for construction of 50 bed tribal girls ashram at Ghandi block Tamnagar Distt Raipur,


Chief Engineer
& Nodal Officer Tribal Department
Panchayat & Rural Development
C.G. Raipur


Executive Engineer
S.T. & S.C. Development
Raipur (C.G.)

DETAILED ESTIMATE FOR 50 BED ASHRAM BHAVAN

FOR TRIBAL DEVELOPMENT DEPARTMENT

As per PWD Building SOR - 01.01.2015

BUILDING WORKS

SN	REF	DESCRIPTION	NO	L	W	H/D	QTY	UNIT	RATE	AMOUNT
1	1.1	Excavation for all types and sizes of foundations, trenches and drains or for any other purpose including disposal of excavated stuff upto 1.5 m lift and lead upto 50m (at least 5m away from the excavated area), including dressing and leveling of pits.								
	1	In all types of soils.								
		beam excavation	1	611.13	0.40	0.30	73.34			
		F1 C1	65	2.20	2.20	2.00	629.20			
		F2 C2	10	2.40	2.40	2.00	115.20			
		F3 C3	44	1.80	1.80	2.00	285.12			
		F4 C4	3	2.00	2.00	2.00	24.00			
							1126.86	cum	185.00	208468.29
2	1.6	Extra for every additional lift of 1.5 m or part thereof.								
	1	All types of soils								
		F1 C1	65	2.20	2.20	0.50	157.30			
		F2 C2	10	2.40	2.40	0.50	28.80			
		F3 C3	44	1.80	1.80	0.50	71.28			
		F4 C4	3	2.00	2.00	0.50	6.00			
							263.38	cum	25.50	6979.57
3	1.17	Filling from available excavated stuff (Excluding rock) in trenches, plinth, sides of foundation etc. in layers not exceeding 20cm in depth consolidating each deposited layer by ramming and watering with a lead upto 50 M. and lift upto 1.5 M.								
		Plinth filling								
		left+right wing rooms	10	7.00	5.00	1.00	350.00			
		corridor	2	1.80	22.20	1.00	79.92			
		toilets	2	3.70	5.00	1.00	37.00			
			2	3.10	5.00	1.00	31.00			
		back wing rooms	3	6.00	7.00	1.00	126.00			
		teachers room + library	2	3.95	5.00	1.00	39.50			
		toilet corridor	2	2.10	5.00	1.00	21.00			
		back +front wing corridor	2	31.30	1.80	1.00	112.68			
		front wing wing bed rooms	2	3.30	3.60	1.00	23.76			
		ots + kitchen	2	3.30	2.40	1.00	15.84			
		toilet	1	2.20	1.20	1.00	2.64			
		store	1	1.20	2.40	1.00	2.88			
		toilet	1	1.20	5.00	1.00	6.00			
		hall	1	3.00	6.00	1.00	18.00			
		verandah	1	3.00	1.40	1.00	4.20			
		entrance	1	7.50	6.00	1.00	45.00			
		porch	1	7.50	6.30	0.40	18.90			
		staircase block	1	3.00	4.05	1.00	12.15			
		sick room	1	3.00	1.40	1.00	4.20			
		sick room	1	3.00	1.75	1.00	5.25			
		dinning hall	1	5.00	7.60	1.00	38.00			
		store + wash	2	1.70	2.40	1.00	8.16			
		kitchen	1	3.60	5.00	1.00	18.00			
		total filling required in plinth					1020.08			
		only 20% of total required filling in plinth done with excavated stuff	20%	1020.08			204.02	cum	65.00	13261.04

SN	REF	DESCRIPTION	NO	L	W	H/D	QTY	UNIT	RATE	AMOUNT
4	1.18	Providing and filling in plinth with sand/ Crusher dust and hard moonum under floor in layers not exceeding 20cm in depth consolidating each deposited layer by ramming and wetting, including dressing etc. complete.								
		Filling in column pits								
		total excavation as in 1.1.1	1	1126.85			1126.85			
		base concrete in column pit as in 3.1.3	1	103.46			-103.46			
		rcc in footing as in 3.2.1	1	151.47			-151.47			
		balance 80% of total required filling in plinth	80%	1020.08			816.06			
							1687.99	cum	371.00	626243.14
5	3.1	Providing and laying nominal mix plain cement concrete with crushed stone aggregate using concrete mixer in all works upto plinth level excluding cost of form work.								
	3	1:3:6 (1 cement : 3 coarse sand : 6 graded stone aggregate 40mm nominal size)								
		below beam	1	611.13	0.40	0.10	24.45			
		F1 C1	65	2.20	2.20	0.15	47.19			
		F2 C2	10	2.40	2.40	0.15	8.64			
		F3 C3	44	1.80	1.80	0.15	21.38			
		F4 C4	3	2.00	2.00	0.15	1.80			
						A =	103.46			
		left+right wing rooms	10	7.00	5.00	0.10	35.00			
		corridor	2	1.80	22.20	0.10	7.99			
		toilets	2	3.70	5.00	0.10	3.70			
			2	3.10	5.00	0.10	3.10			
		back wing rooms	3	6.00	7.00	0.10	12.60			
		teachers room + library	2	3.95	5.00	0.10	3.95			
		toilet corridor	2	2.10	5.00	0.10	2.10			
		back +front wing corridor	2	31.30	1.80	0.10	11.27			
		front wing wing bed rooms	2	3.30	3.60	0.10	2.38			
		ots + kitchen	2	3.30	2.40	0.10	1.58			
		toilet	1	2.20	1.20	0.10	0.26			
		store	1	1.20	2.40	0.10	0.29			
		toilet	1	1.20	5.00	0.10	0.60			
		hall	1	3.00	6.00	0.10	1.80			
		verandah	1	3.00	1.40	0.10	0.42			
		entrance	1	7.50	6.00	0.10	4.50			
		porch	1	7.50	6.30	0.10	4.73			
		staircase block	1	3.00	4.05	0.10	1.22			
		sick room	1	3.00	1.40	0.10	0.42			
		sick room	1	3.00	1.75	0.10	0.53			
		dinning hall	1	5.00	7.60	0.10	3.80			
		store + wash	2	1.70	2.40	0.10	0.82			
		kitchen	1	3.60	5.00	0.10	1.80			
						B =	104.84			
						A+B =	208.30	cum	2970.00	618657.53
6	3.2	Providing and laying nominal mix reinforced cement concrete with crushed stone aggregate using concrete mixer in all works upto plinth level excluding cost of form work.								
	1	1:1½:3 (1 cement : 1½ coarse sand : 3 graded stone aggregate 20mm nominal size).								
		RCC in plinth								
		Column footing - F1 C1	65	1.90	1.90	0.20	46.93			
		F2 C2	10	2.10	2.10	0.20	8.82			
		F3 C3	44	1.50	1.50	0.20	19.80			
		F4 C4	3	1.70	1.70	0.20	1.73			
		trapezoid- F1, A1 = (1.9 x 1.9 = 3.61), A2 = (0.35 x 0.55 = 0.19), Am = (1.9 + 0.35)/2 x (1.9 + 0.55)/2 = 1.38, 1/6(A1 + A2 + 4Am) = 1.55	65	1.55		0.40	40.30			

SN	REF	DESCRIPTION	NO	L	W	H/D	QTY	UNIT	RATE	AMOUNT
		trapezoid- F2, $A1 = (2.1 \times 2.1 = 4.41)$, $A2 = (0.45 \times 0.55 = 0.25)$, $Am = (2.1 + 0.55)/2 \times (2.1 + 0.45)/2 = 1.69$, $1/6(A1 + A2 + 4Am) = 1.90$	10	1.90		0.40	7.60			
		trapezoid- F3, $A1 = (1.5 \times 1.5 = 2.25)$, $A2 = (0.35 \times 0.45 = 0.16)$, $Am = (1.5 + 0.35)/2 \times (1.5 + 0.45)/2 = 0.9$, $1/6(A1 + A2 + 4Am) = 1.00$	44	1.00		0.30	13.20			
		trapezoid- F4, $A1 = (1.7 \times 1.7 = 2.89)$, $A2 = (0.45 \times 0.45 = 0.20)$, $Am = (1.7 + 0.45)/2 \times (1.7 + 0.45)/2 = 1.16$, $1/6(A1 + A2 + 4Am) = 1.29$	3	1.29		0.30	1.16			
		column upto ground - C1	65	0.20	0.40	1.25	6.50			
		C2	10	0.30	0.40	1.25	1.50			
		C3	44	0.20	0.30	1.35	3.56			
		C4	3	0.30	0.30	1.35	0.36			
						a =	151.47			
		Column in plinth - C1	65	0.20	0.40	1.10	5.72			
		C2	10	0.30	0.40	1.10	1.32			
		C3	44	0.20	0.30	1.10	2.90			
		C4	3	0.30	0.30	0.50	0.14			
		GROUND/PLINTH BEAM								
		HORIZONTAL - left + right wing								
		GB2, rooms	20	3.10	0.20	0.40	4.96			
		bracket	2	1.00	0.20	0.40	0.16			
		GB3, toilet	4	3.30	0.20	0.45	1.19			
			4	3.70	0.20	0.45	1.33			
		GB2	4	2.90	0.20	0.40	0.93			
		GB1, toilet comdor	4	2.10	0.20	0.30	0.50			
		back wing GB1, rooms	8	2.78	0.20	0.30	1.33			
			4	2.80	0.20	0.30	0.67			
		GB2, teachers room + library	4	3.95	0.20	0.40	1.26			
		back + front corridor, GB1	12	3.10	0.20	0.30	2.23			
			4	3.20	0.20	0.30	0.77			
		front wing, bed rooms, o/s, kitchen, GB2	8	3.30	0.20	0.40	2.11			
		GB1, toilet + store	4	1.20	0.20	0.30	0.29			
		GB2, hall	1	2.95	0.20	0.40	0.24			
			3	3.00	0.20	0.40	0.72			
		GB4, entrance	2	7.50	0.20	0.60	1.80			
		GB1, porch	2	3.55	0.20	0.30	0.43			
		GB2, staircase, sick room	4	3.00	0.20	0.40	0.96			
		GB3, dinning	2	5.00	0.20	0.45	0.90			
		GB3, store + wash	2	3.60	0.20	0.45	0.65			
		GB2, kitchen	1	3.60	0.20	0.40	0.29			
		bracket	6	1.00	0.20	0.40	0.48			
		VERTICAL - left + right wing								
		GB3, rooms, toilet	26	5.00	0.20	0.45	11.70			
		GB1, toilet partitions	8	1.40	0.20	0.30	0.67			
		GB3, toilet comdor	2	4.60	0.20	0.45	0.83			
		GB1, comdor	12	2.85	0.20	0.30	2.05			
			2	2.90	0.20	0.30	0.35			
		bracket	4	0.60	0.20	0.40	0.19			
		back wing, GB2, rooms	8	3.03	0.20	0.40	1.94			
		front wing, bed room, GB2	2	3.20	0.20	0.40	0.51			
		GB3	1	3.20	0.20	0.45	0.29			
		GB3, o/s	1	3.80	0.20	0.45	0.34			
		GB3, kitchen	2	3.60	0.20	0.45	0.65			
		GB1 toilet	1	1.20	0.20	0.30	0.07			
		GB3, hall + verandah	1	3.60	0.20	0.45	0.32			
			1	3.55	0.20	0.40	0.28			
		GB3	1	3.20	0.20	0.45	0.29			
		GB5	1	3.15	0.20	0.65	0.41			
		GB2, porch	2	4.60	0.20	0.40	0.74			
		GB2, staircase	1	3.55	0.20	0.40	0.28			
			1	3.60	0.20	0.40	0.29			
		GB5, sick room	1	3.15	0.20	0.65	0.41			

SN	REF	DESCRIPTION	NO	L	W	H/D	QTY	UNIT	RATE	AMOUNT
		GB2	1	3.20	0.20	0.40	0.26			
		GB3, store, wash	2	3.60	0.20	0.45	0.65			
		GB2, kitchen	2	3.20	0.20	0.40	0.51			
		bracket	12	0.60	0.20	0.40	0.58			
						b =	58.89			
						A(a+b)=	210.36			
		RCC ABOVE PLINTH								
		Column above plinth - C1	65	0.20	0.40	3.60	16.72			
		C2	10	0.30	0.40	3.60	4.32			
		C3	44	0.20	0.30	3.60	9.50			
		C4	3	0.30	0.30	4.20	1.13			
		SLAB BEAM								
		HORIZONTAL - left + right wing, B1, rooms	20	3.10	0.20	0.40	4.96			
		bracket	2	1.00	0.20	0.40	0.16			
		B2, toilet	4	3.30	0.20	0.45	1.19			
		B1	4	2.90	0.20	0.40	0.93			
		B5, toilet corridor	4	2.10	0.20	0.30	0.50			
		back wing B5, rooms	8	2.78	0.20	0.30	1.33			
			4	2.80	0.20	0.30	0.67			
		B3	2	5.85	0.20	0.50	1.17			
			1	5.90	0.20	0.50	0.59			
		B1, teachers room + library	4	3.95	0.20	0.40	1.26			
		B5	12	3.10	0.20	0.30	2.23			
			4	3.20	0.20	0.30	0.77			
		front wing, bed rooms, ots, kitchen, B1	6	3.30	0.20	0.40	1.58			
		B5, toilet + store	3	1.20	0.20	0.30	0.22			
		B1, hall	1	2.95	0.20	0.40	0.24			
			2	3.00	0.20	0.40	0.48			
		B4, entrance	3	7.40	0.20	0.65	2.89			
		B1, porch	2	3.55	0.20	0.40	0.57			
		B2, staircase, sick room	1	2.95	0.20	0.45	0.27			
			1	3.00	0.20	0.45	0.27			
		B1	1	3.00	0.20	0.40	0.24			
		B2, dining	3	5.00	0.20	0.45	1.35			
		B1, store + wash + kitchen	3	3.60	0.20	0.40	0.86			
		bracket	6	1.00	0.20	0.40	0.48			
		VERTICAL - left + right wing, B2, rooms, toilet	36	5.00	0.20	0.45	16.20			
		B2, toilet corridor	2	4.50	0.20	0.45	0.83			
		GB1, corridor	12	2.85	0.20	0.30	2.05			
			2	2.90	0.20	0.30	0.35			
		bracket	4	0.60	0.20	0.40	0.19			
		back wing, B1, rooms	8	3.03	0.20	0.40	1.94			
		front wing, bed room, hall, B1	4	3.20	0.20	0.40	1.02			
		B1, ots, kitchen, store, B1	4	3.80	0.20	0.40	1.22			
		B2, entrance	2	3.10	0.20	0.45	0.56			
			2	3.55	0.20	0.45	0.64			
			1	3.80	0.20	0.45	0.34			
			1	3.60	0.20	0.45	0.32			
		porch	3	4.60	0.20	0.45	1.24			
		B2, mess	1	3.60	0.20	0.45	0.32			
			1	3.20	0.20	0.45	0.29			
		B1	1	3.60	0.20	0.40	0.29			
			1	3.20	0.20	0.40	0.26			
		B1, store	1	3.60	0.20	0.40	0.29			
		B1, kitchen	1	3.20	0.20	0.40	0.26			
		bracket	12	0.60	0.20	0.40	0.58			
		LINTEL, horizontal, left-right wing, rooms	20	3.10	0.20	0.20	2.48			
		bracket	2	1.00	0.20	0.20	0.08			
		toilet	2	3.30	0.20	0.20	0.26			
			2	3.70	0.20	0.20	0.30			
		toilet corridor	2	2.10	0.20	0.20	0.17			
		back wing B5, rooms	8	2.78	0.20	0.20	0.89			

SN	REF	DESCRIPTION	NO	L	W	H/D	QTY	UNIT	RATE	AMOUNT
			4	2.80	0.20	0.20	0.45			
		B3	2	5.85	0.20	0.20	0.47			
			1	5.90	0.20	0.20	0.24			
		B1, teachers room + library	4	3.95	0.20	0.20	0.63			
		back + front corridor	12	3.10	0.20	0.20	1.49			
			4	3.20	0.20	0.20	0.51			
		front wing, bed rooms, oits, kitchen	8	3.30	0.20	0.20	1.06			
		toilet + store	4	1.20	0.20	0.20	0.19			
		hall	2	2.95	0.20	0.20	0.24			
			1	3.00	0.20	0.20	0.12			
		entrance	1	7.50	0.20	0.20	0.30			
		sick room	1	2.95	0.20	0.20	0.12			
		dinning	2	5.00	0.20	0.20	0.40			
		store + wash, kitchen	3	3.60	0.20	0.20	0.43			
		bracket	6	1.00	0.20	0.20	0.24			
		100 mm wall, toilet	4	3.90	0.10	0.20	0.31			
		VERTICAL - left + right wing, rooms, toilet	24	5.00	0.20	0.20	4.80			
		toilet corridor	2	4.60	0.20	0.20	0.37			
		corridor	12	2.85	0.20	0.20	1.37			
			2	2.90	0.20	0.20	0.23			
		bracket	4	0.60	0.20	0.20	0.10			
		back wing, rooms	8	3.03	0.20	0.20	0.97			
		front wing, bed room, toilet verandah	4	3.20	0.20	0.20	0.51			
		oits, kitchen, store, hall	4	3.60	0.20	0.20	0.58			
		entrance	2	3.55	0.20	0.20	0.28			
			2	3.10	0.20	0.20	0.25			
		porch	2	3.35	0.20	0.20	0.27			
		dinning, store	3	3.60	0.20	0.20	0.43			
		dinning, store	2	3.20	0.20	0.20	0.26			
		bracket	12	0.60	0.20	0.20	0.29			
		LOFT, room	20	1.00	0.60	0.10	1.20			
		kitchen platform	1	3.60	0.60	0.10	0.22			
			1	3.20	0.60	0.10	0.19			
		kitchen platform, warden	1	3.30	0.60	0.10	0.20			
			1	1.80	0.60	0.10	0.11			
		room shelves	60	2.00	0.60	0.10	7.20			
		store shelf	4	2.40	0.60	0.10	0.58			
			4	1.50	0.60	0.10	0.36			
			4	0.80	0.60	0.10	0.19			
		store shelf, warden	4	1.20	0.60	0.10	0.29			
			4	1.95	0.60	0.10	0.47			
		CHHAJJA, left-right wing, room-windows	10	1.90	0.60	0.10	1.14			
		toilet	2	8.00	0.60	0.10	0.96			
			2	5.20	0.60	0.10	0.62			
		back wing, room-windows	2	1.90	0.60	0.10	0.23			
			2	3.70	0.60	0.10	0.44			
		teachers room + library	2	1.90	0.60	0.10	0.23			
		front wing windows	1	11.80	0.60	0.10	0.71			
			1	12.40	0.60	0.10	0.74			
		kitchen, wash	2	1.00	0.60	0.10	0.12			
		corridor	2	27.30	0.60	0.10	3.28			
			2	20.60	0.60	0.10	2.47			
		SLAB, rooms, left-right wing	10	5.00	3.50	0.12	21.00			
			10	5.00	3.30	0.12	19.80			
		common toilet	2	3.70	5.00	0.15	5.55			
			2	3.10	5.00	0.15	4.65			
		toilet corridor	2	2.10	5.00	0.12	2.52			
		back wing rooms	6	6.00	3.40	0.15	18.36			
		teachers room + library	2	3.95	5.00	0.12	4.74			
		front wing, bed rooms	2	3.30	3.60	0.12	2.85			
		kitchen	1	3.30	3.80	0.12	1.50			

SN	REF	DESCRIPTION	NO	L	W	H/D	QTY	UNIT	RATE	AMOUNT
		store + toilet	1	1.20	3.60	0.12	0.52			
			1	1.20	3.80	0.12	0.55			
		hall	1	3.80	3.00	0.12	1.37			
			1	3.60	3.00	0.12	1.30			
		entrance	2	3.65	3.80	0.15	4.16			
			2	3.65	3.60	0.15	3.94			
		porch	2	3.65	4.70	0.15	5.15			
		sick room	1	1.75	3.00	0.12	0.63			
		dinning	1	5.00	3.80	0.12	2.28			
			1	5.00	3.60	0.12	2.16			
		kitchen	1	3.60	3.60	0.12	1.56			
		store + wash	1	3.80	3.60	0.12	1.64			
		steps (triangle 0.30 x 0.15 x 1/2 = 0.02)	24	1.40		0.02	0.67			
		waist slab	1	4.1	1.4	0.15	0.86			
			1	3	1.4	0.15	0.63			
						B =	240.46			
		RCC WORK ON FF								
		Column - C1	3	0.20	0.40	2.60	0.62			
		C2	3	0.30	0.45	2.60	1.05			
		slab beam B1	3	3.00	0.20	0.40	0.72			
		B1	2	3.60	0.20	0.40	0.58			
		B1	2	3.20	0.20	0.40	0.51			
		slab	1	3.80	3.00	0.12	1.37			
			1	3.60	3.00	0.12	1.30			
		chhaga	1	1.40	0.60	0.10	0.08			
						C =	6.23			
						A+B+C =	457.05	cum	4163.00	1902717.05
7	3.4	Extra for laying PCC/RCC of any grade in superstructure above plinth level for every floor or part thereof in addition to rate for foundation and plinth:								
		GF, Qty of total "B" in 3.2.1	1	240.46			240.46	cum	97.50	23444.87
		FF, Qty of total "C" in 3.2.1, rate 2 times	2	6.23			12.47	cum	97.50	1215.44
8	3.12	Providing and placing in position reinforcement for R.C.C. work including straightening, cutting, bending, binding etc. complete as per drawings including cost of binding wire in foundation and plinth all complete:								
	1	Thermo-Mechanically treated bars FE 415								
		wt. @ 110 kg/cum,	1	457.05		110.00	50275.97	kg	54.50	2740040.53
9	3.13	Providing and laying damp proof course (upto 50mm thick) with plain cement concrete 1:2:4 (1 cement : 2 coarse sand : 4 graded crushed stone aggregate 20mm nominal size) including form work.								
		horizontal, left-right wing, rooms	20	3.10	0.20	0.05	0.62			
		bracket	2	1.00	0.20	0.05	0.02			
		toilet	2	3.30	0.20	0.05	0.07			
			2	3.70	0.20	0.05	0.07			
		toilet corridor	2	2.10	0.20	0.05	0.04			
		back wing, rooms	4	5.85	0.20	0.05	0.23			
			2	5.90	0.20	0.05	0.12			
		staff room + library	4	3.95	0.20	0.05	0.16			
		back + front comdor	12	3.10	0.20	0.05	0.37			
			4	3.20	0.20	0.05	0.13			
		front wing, bed rooms, o/s, kitchen	8	3.30	0.20	0.05	0.26			
		toilet + store	4	1.20	0.20	0.05	0.05			
		hall	2	2.95	0.20	0.05	0.06			
			1	3.00	0.20	0.05	0.03			
		entrance	1	7.50	0.20	0.05	0.08			

SN	REF	DESCRIPTION	NO	L	W	H/D	QTY	UNIT	RATE	AMOUNT
		sick room	1	2.95	0.20	0.05	0.03			
		dinning	2	5.00	0.20	0.05	0.10			
		store + wash, kitchen	3	3.60	0.20	0.05	0.11			
		bracket	6	1.00	0.20	0.05	0.06			
		100 mm wall, toilet	4	3.90	0.10	0.05	0.08			
		VERTICAL - left + right wing, rooms, toilet	24	5.00	0.20	0.05	1.20			
		toilet corridor	2	4.60	0.20	0.05	0.09			
		corridor	12	2.85	0.20	0.05	0.34			
			2	2.90	0.20	0.05	0.06			
		bracket	4	0.60	0.20	0.05	0.02			
		back wing, rooms	8	3.03	0.20	0.05	0.24			
		front wing, bed room, toilet verandah	4	3.20	0.20	0.05	0.13			
		ots, kitchen, store, hall	4	3.60	0.20	0.05	0.14			
		entrance	2	3.55	0.20	0.05	0.07			
			2	3.10	0.20	0.05	0.06			
		dinning, store	3	3.60	0.20	0.05	0.11			
		dinning, store	2	3.20	0.20	0.05	0.06			
		bracket	12	0.60	0.20	0.05	0.07			
							5.29	cum	4237.00	22417.54
10	3.15	Applying a coat of hot bitumen VG-10 using @ 1.7kg/ sqm on damp proof course after cleaning the surface with brushes and finally with a piece of cloth lightly soaked in kerosene oil.								
		horizontal, left-right wing, rooms	20	3.10	0.20		12.40			
		bracket	2	1.00	0.20		0.40			
		toilet	2	3.30	0.20		1.32			
			2	3.70	0.20		1.48			
		toilet corridor	2	2.10	0.20		0.84			
		back wing, rooms	4	5.85	0.20		4.68			
			2	5.90	0.20		2.36			
		staff room + library	4	3.95	0.20		3.16			
		back + front corridor	12	3.10	0.20		7.44			
			4	3.20	0.20		2.56			
		front wing, bed rooms, ots, kitchen	8	3.30	0.20		5.28			
		toilet + store	4	1.20	0.20		0.96			
		hall	2	2.95	0.20		1.18			
			1	3.00	0.20		0.60			
		entrance	1	7.50	0.20		1.50			
		sick room	1	2.95	0.20		0.59			
		dinning	2	5.00	0.20		2.00			
		store + wash, kitchen	3	3.60	0.20		2.16			
		bracket	6	1.00	0.20		1.20			
		100 mm wall, toilet	4	3.90	0.10		1.56			
		VERTICAL - left + right wing, rooms, toilet	24	5.00	0.20		24.00			
		toilet corridor	2	4.60	0.20		1.84			
		corridor	12	2.85	0.20		6.84			
			2	2.90	0.20		1.16			
		bracket	4	0.60	0.20		0.48			
		back wing, rooms	8	3.03	0.20		4.85			
		front wing, bed room, toilet verandah	4	3.20	0.20		2.56			
		ots, kitchen, store, hall	4	3.60	0.20		2.88			
		entrance	2	3.55	0.20		1.42			
			2	3.10	0.20		1.24			
		dinning, store	3	3.60	0.20		2.16			
		dinning, store	2	3.20	0.20		1.28			
		bracket	12	0.60	0.20		1.44			
							105.82	sqm	93.50	9893.98
11	2.1	Providing and fixing form work including centring, shuttering, strutting, staging, propping bracing etc. complete and including its removal at all levels, for:								

SN	REF	DESCRIPTION	NO	L	W	H/D	QTY	UNIT	RATE	AMOUNT
	1	Foundations, footings, bases of columns plinth beam, curtain wall in any shape and size and all type of wall below plinth level.								
		Column footing - F1 C1	65	7.60		0.20	98.80			
		F2 C2	10	8.40		0.20	16.80			
		F3 C3	44	6.00		0.20	52.80			
		F4 C4	3	6.80		0.20	4.08			
		column upto plinth - C1	65	1.20		2.35	183.30			
		C2	10	1.40		2.35	32.90			
		C3	44	1.00		2.45	107.80			
		C4	3	1.20		1.85	6.66			
		GB2, rooms	20	3.10	1.00		62.00			
		bracket	2	1.00	1.00		2.00			
		GB3, toilet	4	3.30	1.10		14.52			
			4	3.70	1.10		16.28			
		GB2	4	2.90	1.00		11.60			
		GB1, toilet corridor	4	2.10	0.80		6.72			
		back wing GB4, rooms	4	5.85	1.20		28.08			
			2	5.90	1.20		14.16			
		staff room + library, GB2	4	3.95	1.00		15.80			
		back + front corridor, GB1	12	3.10	0.80		29.76			
			4	3.20	0.80		10.24			
		front wing, bed rooms, ols, kitchen, GB2	8	3.30	1.00		26.40			
		GB1, toilet + store	4	1.20	0.80		3.84			
		GB2, hall	1	2.95	1.00		2.95			
			3	3.00	1.00		9.00			
		GB5, entrance	2	7.50	1.50		22.50			
		GB1, porch	2	3.55	0.80		5.68			
		GB2, staircase, sick room	4	3.00	1.00		12.00			
		GB3, dining	2	5.00	1.10		11.00			
		GB3, store + wash	2	3.60	1.10		7.92			
		GB2, kitchen	1	3.60	1.00		3.60			
		bracket	6	1.00	1.00		6.00			
		GB3, rooms, toilet	26	5.00	1.10		143.00			
		GB1, toilet partitions	8	1.40	0.80		8.96			
		GB3, toilet corridor	2	4.60	1.10		10.12			
		GB1, corridor	12	2.85	0.80		27.36			
			2	2.90	0.80		4.64			
		bracket	4	0.60	1.00		2.40			
		back wing, GB2, rooms	8	3.03	1.00		24.24			
		front wing, bed room, GB2	2	3.20	1.00		6.40			
		GB3	1	3.20	1.10		3.52			
		GB3, ols	1	3.80	1.10		4.18			
		GB3, kitchen	2	3.60	1.10		7.92			
		GB1 toilet	1	1.20	0.80		0.96			
		GB3, hall + verandah	1	3.60	1.10		3.96			
			1	3.55	1.00		3.55			
		GB3	1	3.20	1.10		3.52			
		GB5	1	3.15	1.50		4.73			
		GB1, porch	2	3.35	0.80		5.36			
		GB2, staircase	1	3.55	1.00		3.55			
			1	3.60	1.00		3.60			
		GB5, sick room	1	3.15	1.50		4.73			
		GB2	1	3.20	1.00		3.20			
		GB3, store, wash	2	3.60	1.10		7.92			
		GB2, kitchen	2	3.20	1.00		6.40			
		bracket	12	0.60	1.00		7.20			
							1126.60	sqm	139.00	156597.40
	5	Columns, Pillars, Piers and likes- rectangular or square in shape								
		Column above plinth - C1	65	1.20		3.60	280.80			

SN	REF	DESCRIPTION	NO	L	W	H/D	QTY	UNIT	RATE	AMOUNT
			C2	10	1.40	3.60	50.40			
			C3	44	1.00	3.60	158.40			
			C4	3	1.20	4.20	15.12			
		staircase tower - C1	3	1.20		2.60	9.36			
			C2	3	1.40	2.60	10.92			
							525.00	sqm	297.00	155925.00
7		Suspended floors, roofs, access platform, balconies (plain surfaces) and shelves (cast in situ)								
		SLAB, rooms, left-right wing	10	5.00	3.50		175.00			
			10	5.00	3.30		165.00			
		common toilet	2	3.70	5.00		37.00			
			2	3.10	5.00		31.00			
		toilet corridor	2	2.10	5.00		21.00			
		back wing rooms	6	6.00	3.40		122.40			
		staff room + library	2	3.95	5.00		39.50			
		front wing, bed rooms	2	3.30	3.60		23.76			
		kitchen	1	3.30	3.80		12.54			
		store + toilet	1	1.20	3.60		4.32			
			1	1.20	3.80		4.56			
		hall	1	3.80	3.00		11.40			
			1	3.60	3.00		10.80			
		entrance	2	3.65	3.80		27.74			
			2	3.65	3.60		26.28			
		porch	2	3.65	4.70		34.31			
		sick room	1	1.75	3.00		5.25			
		dinning	1	5.00	3.80		19.00			
			1	5.00	3.60		18.00			
		kitchen	1	3.60	3.60		12.96			
		store + wash	1	3.80	3.60		13.68			
		LOFT, room	20	1.00	0.60		12.00			
		kitchen platform	1	3.60	0.60		2.16			
			1	3.20	0.60		1.92			
		kitchen platform, warden	1	3.30	0.60		1.98			
			1	1.80	0.60		1.08			
		room shelves	60	2.00	0.60		72.00			
		store shelf	4	2.40	0.60		5.76			
			4	1.50	0.60		3.60			
			4	0.80	0.60		1.92			
		store shelf, warden	4	1.20	0.60		2.88			
			4	1.95	0.60		4.68			
							925.48	sqm	235.00	217487.80
8		Beams, lintels, cantilevers & walls								
		HORIZONTAL - left + right wing, B1, rooms	20	3.10	1.00		62.00			
		bracket	2	1.00	1.00		2.00			
		B2, toilet	4	3.30	1.10		14.52			
		B1	4	2.90	1.00		11.60			
		B5, toilet corridor	4	2.10	0.80		6.72			
		back wing B3, rooms	6	5.85	1.20		42.12			
			3	5.90	1.20		21.24			
		back + front corridor, B1	2	3.95	1.00		7.90			
		B5	12	3.10	0.80		29.76			
			4	3.20	0.80		10.24			
		front wing, bed rooms, o/s, kitchen, B1	6	3.30	1.00		19.80			
		B5, toilet + store	3	1.20	0.80		2.88			
		B1, hall	1	2.95	1.00		2.95			
			2	3.00	1.00		6.00			
		B4, entrance	3	7.40	1.50		33.30			
		B1, porch	2	3.55	1.00		7.10			
		B2, staircase, sick room	1	2.95	1.10		3.25			
			1	3.00	1.10		3.30			
		B1	1	3.00	1.00		3.00			

SN	REF	DESCRIPTION	NO	L	W	H/D	QTY	UNIT	RATE	AMOUNT
		B2, dining	3	5.00	1.10		16.50			
		B1, store + wash + kitchen	3	3.60	1.00		10.80			
		bracket	6	1.00	1.00		6.00			
		VERTICAL - left + right wing, B2, rooms, toilet	36	5.00	1.10		198.00			
		B2, toilet corridor	2	4.60	1.10		10.12			
		GB1, corridor	12	2.85	0.80		27.36			
			2	2.90	0.80		4.64			
		bracket	4	0.60	1.00		2.40			
		back wing, B1, rooms	8	3.03	1.00		24.24			
		front wing, bed room, hall, B1	4	3.20	1.00		12.80			
		B1, ots, kitchen, store, B1	4	3.80	1.00		15.20			
		B2, entrance	2	3.60	1.10		7.92			
			2	3.55	1.10		7.81			
		porch	2	3.35	1.10		7.37			
		B2, mess	1	3.60	1.10		3.96			
			1	3.20	1.10		3.52			
		B1	1	3.60	1.00		3.60			
			1	3.20	1.00		3.20			
		B1, store	1	3.60	1.00		3.60			
		B1, kitchen	1	3.20	1.00		3.20			
		bracket	12	0.60	1.00		7.20			
		UNTEL, horizontal, left-right wing, rooms	20	3.10	0.60		37.20			
		bracket	2	1.00	0.60		1.20			
		toilet	2	3.30	0.60		3.96			
			2	3.70	0.60		4.44			
		toilet corridor	2	2.10	0.60		2.52			
		back wing, rooms	4	5.85	0.60		14.04			
			2	5.90	0.60		7.08			
		back + front corridor	2	3.95	0.60		4.74			
			12	3.10	0.60		22.32			
			4	3.20	0.60		7.68			
		front wing, bed rooms, ots, kitchen	8	3.30	0.60		15.84			
		toilet + store	4	1.20	0.60		2.88			
		hall	2	2.95	0.60		3.54			
			1	3.00	0.60		1.80			
		entrance	1	7.50	0.60		4.50			
		sick room	1	2.95	0.60		1.77			
		dinning	2	5.00	0.60		6.00			
		store + wash, kitchen	3	3.60	0.60		6.48			
		bracket	6	1.00	0.60		3.60			
		100 mm wall, toilet	4	3.90	0.50		7.80			
		VERTICAL - left + right wing, rooms, toilet	24	5.00	0.60		72.00			
		toilet corridor	2	4.60	0.60		5.52			
		corridor	12	2.85	0.60		20.52			
			2	2.90	0.60		3.48			
		bracket	4	0.60	0.60		1.44			
		back wing, rooms	8	3.03	0.60		14.54			
		front wing, bed room, toilet verandah	4	3.20	0.60		7.68			
		ots, kitchen, store, hall	4	3.60	0.60		8.64			
		entrance	2	3.55	0.60		4.26			
			2	3.10	0.60		3.72			
		porch	2	3.35	0.60		4.02			
		dinning, store	3	3.60	0.60		6.48			
		dinning, store	2	3.20	0.60		3.84			
		bracket	12	0.60	0.60		4.32			
							988.97	sqm	202.00	199771.74
13		Weather shade, chhaja, Cornices and mouldings								
		CHHAJA, left-right wing, room-windows	10	1.90	0.60		11.40			
		toilet	2	8.00	0.60		9.60			
			2	5.20	0.60		6.24			
		back wing, room-windows	2	1.90	0.60		2.28			

SN	REF	DESCRIPTION	NO	L	W	H/D	QTY	UNIT	RATE	AMOUNT
			2	3.70	0.60		4.44			
		front wing windows	1	11.80	0.60		7.08			
			1	12.40	0.60		7.44			
		kitchen, wash	2	1.00	0.60		1.20			
		corridor	2	27.30	0.60		32.76			
			2	20.60	0.60		24.72			
							107.16	sqm	294.00	31505.04
15		Stair cases of all types excluding spiral and folded plate type, including risers and landings								
		steps, 2 sides = 24 nos x 2 = 48, (triangle 0.30 x 0.15 x 1/2 = 0.02)	48			0.02	0.96			
		waist slab	1	4.1	1.6		6.56			
			1	3	1.6		4.80			
							12.32	sqm	230.00	2833.60
12	7.5	Brick work with modular fly-ash lime bricks (FaLG Bricks) conforming to IS:12894-2002 of class designation 4.0 in foundation and plinth in:								
	4	Cement Mortar 1:6 (1 cement : 6 coarse sand)								
		Brick in plinth								
		brick work under ground beam	1	611.13	0.20	0.20	24.45			
		brick work upto plinth								
		HORIZONTAL - left + right wing, rooms, GB2	20	3.10	0.20	0.70	8.68			
		bracket	2	1.00	0.20	0.70	0.28			
		toilet, GB3	4	3.30	0.20	0.65	1.72			
		, GB2	4	2.90	0.20	0.70	1.62			
		toilet corridor, GB1	4	2.10	0.20	0.80	1.34			
		back wing, rooms	4	5.85	0.20	0.60	2.81			
			2	5.90	0.20	0.60	1.42			
		staff room + library, GB2	4	3.95	0.20	0.70	2.21			
		front wing, bed rooms, o/s, kitchen, GB2	8	3.30	0.20	0.70	3.70			
		toilet + store, GB1	3	1.20	0.20	0.80	0.58			
		hall, GB2	2	3.00	0.20	0.70	0.84			
		entrance, GB5	1	7.50	0.20	0.45	0.68			
		GB2, staircase, sick room, GB2	2	2.95	0.20	0.70	0.83			
		, GB2	1	3.00	0.20	0.70	0.42			
		dinning, GB3	2	5.00	0.20	0.65	1.30			
		store + wash, GB3	2	3.60	0.20	0.65	0.94			
		kitchen, GB2	1	3.60	0.20	0.70	0.50			
		bracket	6	1.00	0.20	0.70	0.84			
		VERTICAL - left + right wing, rooms, toilet, GB3	24	5.00	0.20	0.65	15.60			
		toilet corridor, GB3	2	4.60	0.20	0.65	1.20			
		bracket	4	0.60	0.20	0.70	0.34			
		back wing, rooms, GB2	8	3.03	0.20	0.70	3.39			
		front wing, bed room, GB2	2	3.20	0.20	0.70	0.90			
		toilet, GB3	2	3.20	0.20	0.65	0.83			
		o/s, toilet, GB3	1	3.80	0.20	0.65	0.49			
		kitchen, store, GB3	3	3.80	0.20	0.65	1.48			
		entrance, GB2	2	3.55	0.20	0.70	0.99			
		, GB5	2	3.15	0.20	0.45	0.57			
		mess, GB2	1	3.60	0.20	0.70	0.50			
		, GB2	2	3.20	0.20	0.70	0.90			
		, GB3	1	3.60	0.20	0.65	0.47			
		wash, GB3	1	3.60	0.20	0.65	0.47			
		kitchen, GB2	1	3.20	0.20	0.70	0.45			
		bracket	12	0.60	0.20	0.70	1.01			
						A =	84.72			
		Brick above plinth								
		HORIZONTAL - left + right wing								
		HORIZONTAL - left + right wing, rooms, B1	20	3.10	0.20	3.20	39.68			
		bracket, B1	2	1.00	0.20	3.20	1.28			

SN	REF	DESCRIPTION	NO	L	W	H/D	QTY	UNIT	RATE	AMOUNT
		toilet, B2	4	3.30	0.20	3.15	8.32			
		B1	4	2.90	0.20	3.20	7.42			
		toilet corridor, B5	4	2.10	0.20	3.30	5.54			
		back wing, rooms, B3	4	5.85	0.20	3.10	14.51			
		, B3	2	5.90	0.20	3.10	7.32			
		staff room + library, B1	4	3.95	0.20	3.20	10.11			
		front wing, bed rooms, ots, kitchen, B1	8	3.30	0.20	3.20	16.90			
		toilet + store, B5	3	1.20	0.20	3.30	2.38			
		hall, B1	2	3.00	0.20	3.20	3.84			
		entrance	1	7.50	0.20	2.95	4.43			
		G82, staircase, sick room, B1	2	2.95	0.20	3.20	3.78			
			1	3.00	0.20	3.20	1.92			
		dinning, B2	2	5.00	0.20	3.15	6.30			
		store + wash, B2	2	3.60	0.20	3.15	4.54			
		kitchen, B1	1	3.60	0.20	3.20	2.30			
		bracket, B1	6	1.00	0.20	3.20	3.84			
		VERTICAL - left + right wing, rooms, toilet, B2	24	5.00	0.20	3.15	75.60			
		toilet corridor, B2	2	4.60	0.20	3.15	5.80			
		bracket, B1	4	0.60	0.20	3.20	1.54			
		back wing, rooms, B1	8	3.03	0.20	3.20	15.51			
		front wing, bed room, B1	2	3.20	0.20	3.20	4.10			
		toilet, B2	2	3.20	0.20	3.15	4.03			
		ots, toilet	1	3.80	0.20	3.15	2.39			
		kitchen, store, B2	3	3.80	0.20	3.15	7.18			
		entrance, B1	2	3.55	0.20	3.20	4.54			
			2	3.15	0.20	2.95	3.72			
		mess, B1	1	3.60	0.20	3.20	2.30			
		, B1	2	3.20	0.20	3.20	4.10			
		, B2	1	3.60	0.20	3.15	2.27			
		wash, B2	1	3.60	0.20	3.15	2.27			
		kitchen, B1	1	3.20	0.20	3.20	2.05			
		bracket	12	0.60	0.20	3.20	4.61			
						B =	286.40			
		Deduction								
		D1	1	2.00	0.20	3.00	-1.20			
		D2	5	1.20	0.20	2.10	-2.52			
		D3	15	1.00	0.20	2.10	-6.30			
		D4	6	0.90	0.20	2.10	-2.27			
		W1	25	1.50	0.20	1.30	-9.75			
		W2	4	1.00	0.20	1.70	-1.36			
		WK	3	1.50	0.20	0.90	-0.81			
		V	19	0.90	0.20	0.60	-2.05			
						C =	-26.26			
		Brick on FF								
		parapet	1	290.00	0.20	0.90	52.20			
		slab beam B1	3	3.00	0.20	2.20	3.96			
		B1	2	3.60	0.20	2.20	3.17			
		B1	2	3.20	0.20	2.20	2.82			
		deduct door	1	1.00	0.20	2.10	-0.42			
						D =	61.72			
						A+B+C+D =	406.58	cum	3263.00	1326671.85
13	7.6	Extra for brick work in superstructure above plinth level for every floor or part thereof in addition to rate for foundation and plinth:								
		Brick on GF, Qty B+C as in 7.5.4	1	260.14			260.14	cum	121.00	31476.41
		Brick on FF, Qty D as in 7.5.4, Rate 2 times	2	61.72			123.45	cum	121.00	14937.21
14	7.11	Half brick thick brick masonry with fly-ash lime bricks (FaLG Bricks) conforming to IS:12894-2002 of class designation 4.0 in superstructure above plinth level upto plinth level:								

SN	REF	DESCRIPTION	NO	L	W	H/D	QTY	UNIT	RATE	AMOUNT
	2	Cement Mortar 1:4 (1 cement : 4 coarse sand)	4	3.90	2.10		32.76			
			12	1.50	2.10		37.80			
		warden	2	1.20	3.60		8.64			
		Deduct door	14	0.75	2.10		-22.05			
							57.15	sqm	382.00	21831.30
15	7.12	Extra for half brick work in superstructure above plinth level for every story or part thereof in addition to rate for upto plinth level.					57.15	sqm	11.00	628.65
16	7.20	Extra for providing and placing in position hopping 25x1.60 mm or 2 Nos 6mm dia MS bars reinforcement at every third course of half brick masonry.					57.15	sqm	62.50	3571.88
17	8.148	Providing and fixing factory made UPVC door frame made of UPVC profile section having an overall dimension as below (tolerance ± 1 mm) with wall thickness 2.0mm ± 0.2 mm, corners of the door frame to be jointed with galvanized brackets and stainless steel screws, joints mitred and plastic welded. The hinge side vertical of the frames reinforced by galvanized M.S. tube of size 19 X 19mm and 1mm ± 0.1 mm wall thickness and 3 nos. stainless steel hinges fixed to the frame complete as per manufacturers specification and direction of Engineer-in-charge								
	2	Extruded section Profile size 42x50 mm.								
		For toilet doors	14	4.95			69.30	metre	196.00	13582.80
18	8.154	Providing and fixing 30mm thick fibreglass reinforced plastic (F.R.P.) flush door shutter in different plain and wood finish made with fire retardant grade unsaturated polyester resin, moulded to 3mm thick FRP laminate all around, with suitable wooden blocks inside at required places for fixing of fittings and polyurethane foam (PUF) / Polystyrene foam to be used as filler material throughout the hollow panel, casted monolithically with testing parameters of F.R.P. laminate conforming to table - 3 of IS: 14856 : 2000, complete.	14	0.75	2.10		22.05	sqm	2595.00	57219.75
19	9.16	Providing and fixing M.S. frames of doors, windows, ventilators and cupboards joints mitred and welded with 15x3 mm lugs 10cm long embedded in cement concrete blocks 15x10x10cm of grade M-10 or with wooden plugs and screws or with dash fastener or rawl plugs and screws or with fixing clips or with bolts and nuts as required including fixing of necessary butt hinges and screws and applying a priming coat of approved steel primer.								
	2	Angle-iron frames								
		Wt of steel @ 3.8 Kg / m (ISA 50x50x5)								
		D1	1	8.00		3.80	30.40			
		D2	5	5.40		3.80	102.60			
		D3	15	5.20		3.80	296.40			
		D4	6	5.10		3.80	116.28			
							545.68	Kg	73.50	40107.48

SN	REF	DESCRIPTION	NO	L	W	H/D	QTY	UNIT	RATE	AMOUNT
20	8.12	Providing and fixing flush door shutters, conforming to IS : 2202 (Part-I), decorative type core of black board construction with frame of first class hard wood and well matched teak ply veneering with vertical grains or cross bands and face veneers on both faces of shutters excluding hinges.								
	1	40 mm. thick (single leaf)								
		D1	1	2.00		3.00	6.00			
		D2	5	1.20		2.10	12.60			
		D3	15	1.00		2.10	31.50			
		D4	6	0.90		2.10	11.34			
							61.44	sqm	2467.00	151572.48
15	8.15	Extra for double leaf shutter instead of single leaf.								
		D1	1	2.00		3.00	6.00			
		D2	5	1.20		2.10	12.60			
							18.60	sqm	52.00	967.20
21	9.11	Providing and fixing in position collapsible steel shutters with vertical channels 20x10x2mm and braced with flat iron diagonals 20x5mm size with top and bottom rails of T-iron 40x40x6mm with 38mm steel pulleys complete with bolts, nuts, locking arrangement stoppers, handles including applying a priming coat of red oxide zinc chromate primer.								
		D1	1	2.00		3.00	6.00	sqm	3330.00	19980.00
22	8.52	Providing, and fixing M.S. round and square bars with MS flat of required pattern in wooden frames for windows & clerestory windows including applying a priming coat of red oxide zinc chromate primer, welding etc complete								
	1	Plain grill								
		Weight of steel @ 25 kg per sqm								
		W1	25	1.50	1.30	25.00	1218.75			
		W2	4	1.00	1.70	25.00	170.00			
		WK	4	1.50	0.90	25.00	135.00			
		V	19	0.90	0.60	25.00	256.50			
							1780.25	kg	68.00	121057.00
23	8.77	Providing and fixing antique/ SS finished brass butt hinges with antique/ SS polished MS screw complete.								
	1	125x85x5.50mm (Heavy Type)	31	3.00			93.00	each	256.00	23808.00
	2	100x85x5.50 mm (Heavy Type)	14	3.00			42.00	each	256.00	10752.00
24	8.79	Providing and fixing antique/ SS finished brass sliding door bolt with necessary bolts, nuts and antique/ SS polished MS screw complete.								
	1	300x16mm	25				25.00	each	496.00	12400.00
	2	250 x 16mm	14				14.00	each	489.00	6846.00
25	8.80	Providing and fixing antique/ SS finished brass door latch with antique/ SS polished MS screw complete.								
	1	300 x16x5 mm	25				25.00	each	424.00	10600.00
	2	250x16x5 mm	14				14.00	each	424.00	5936.00
26	8.81	Providing and fixing antique/ SS finished brass lower bolts (Barrel type) with antique/ SS polished MS screw complete.								
	1	250 x10 mm	45	1.00			45.00	each	297.00	13365.00

SN	REF	DESCRIPTION	NO	L	W	H/D	QTY	UNIT	RATE	AMOUNT
27	8.84	Providing and fixing antique/ SS finished brass handles with antique/ SS polished MS screw complete.								
	1	125 mm	45	2.00			90.00	each	58.50	5265.00
28	8.90	Providing & fixing 150mm antique/ SS finished brass floor door stopper with rubber cushion and antique/ SS polished MS screw complete to suit the shutter thickness.								
	1	300x16mm	31				31.00	each	77.00	2387.00
29	9.47	Providing and fixing aluminium work for doors, windows, ventilators and partitions made out of extruded aluminium standard sections (main section with minimum 1.5mm thickness) conforming to IS: 733, IS: 1285 mitred and jointed mechanically including aluminium cleats, neoprene weather stripping gasket beveled edge beading, screws duly fixed in wall/ floor with fixing clips or hold fasteners or bolts and nuts as required aluminium sections shall be anodized transparent or dyed to approved shade according to IS: 1868, minimum anodic coating shall be of grade AC-15. (Glazing to be paid for separately).								
	1	For fixed portion								
		Wt of frame @ 3.0 Kg/sqm								
		W1	25	1.50	1.30	3.00	146.25			
		W2	4	1.00	1.70	3.00	20.40			
		WK	4	1.50	0.90	3.00	16.20			
		V	19	0.90	0.60	3.00	30.78			
							213.63	Kg	331.00	70711.53
	2	For shutter of doors, windows & ventilators including providing and making provision for fixing of fitting wherever required including the cost of PVC/ neoprene gasket required (Fittings shall be paid for separately).								
		Wt of frame @ 3.2 Kg/sqm, W1								
		W1	25	1.50	1.30	3.20	156.00			
		W2	4	1.00	1.70	3.20	21.76			
		WK	4	1.50	0.90	3.20	17.28			
		V	19	0.90	0.60	3.20	32.83			
							227.87	Kg	338.00	77020.74
30	9.48	Extra for powder coated (minimum 50 micron) aluminium sections instead of anodized.								
		qty 9.47.1 +9.47.2					441.50	Kg	27.00	11920.55
31	9.51	Providing and fixing glazing in aluminium door, window, ventilator shutters and partitions etc. with PVC/ neoprene gasket etc. complete. (Cost of aluminium snap beading shall be paid in basic item);								
	2	With float glass panes of 5 mm thickness								
		W1	25	1.50		1.30	48.75			
		W2	4	1.00		1.70	6.80			
		WK	4	1.50		0.90	5.40			
		V	19	0.90		0.60	10.26			
							71.21	sqm	708.00	50416.68
32	12.7	Providing and fixing ceramic glazed wall tiles conforming to IS : 15622 of approved make, colours, shades and size on wall and dados over 12 mm thick bed of cement Mortar 1:3 (1 cement : 3 coarse sand) and jointing with grey cement slurry @ 3.3kg per sqm including pointing in white cement mixed with matching pigment complete.								

SN	REF	DESCRIPTION	NO	L	W	H/D	QTY	UNIT	RATE	AMOUNT
	1	Size upto 200x300mm								
		common toilet	12	5.20		2.40	149.76			
			4	3.90		2.40	37.44			
			4	3.10		2.40	29.76			
			2	1.80		2.40	8.64			
			4	1.60		2.40	15.36			
			2	5.00		2.40	24.00			
		warden toilet	1	6.80		2.40	16.32			
			1	7.20		2.40	17.28			
		kitchen (mess)	1	7.40		0.60	4.44			
		warden kitchen	1	5.70		0.60	3.42			
		duct D4	6	0.90		2.10	-9.45			
		D5	14	1.20		2.10	-35.28			
							261.69	sqm	587.00	153612.03
33	12.9	Providing and laying ceramic glazed floor tiles conforming to IS : 15622 of approved size, make, colour, shade laid on 20 mm thick Cement Mortar 1:4 (1 cement : 4 coarse sand) including pointing the joints with white cement mixed with matching pigment etc., complete.								
	12.9.2	Size above 300x300mm								
		Toilet	12	1.10	1.50		19.80			
			2	3.90	1.80		14.04			
			2	3.10	5.00		31.00			
		warden toilet	1	2.20	1.20		2.64			
			1	2.40	1.20		2.88			
							70.36	sqm	728.00	51222.08
34	12.79	Providing and laying double charge/ multi charge (minimum 2.0mm thick layer) vitrified floor tiles with water absorption less than 0.5% and conforming to IS : 15622-2017 of first quality of approved make in all colours and shades and size mentioned below (+/- 10mm), laid on 20mm thick cement mortar 1:4 (1 cement : 4 coarse sand) including grouting the joints with white cement and matching pigments etc. complete.								
	12.79.1	Size 600x600mm thickness 9 to 10mm								
		left+right wing rooms	10	7.00	5.00		350.00			
		back wing rooms	3	7.00	6.00		126.00			
		staff room + library	2	3.95	5.00		39.50			
		front wing bed room	2	3.30	3.60		23.76			
		passage	1	6.10	1.20		7.32			
		kitchen	1	3.30	2.40		7.92			
		store	1	1.20	2.40		2.88			
		hall	1	3.00	6.00		18.00			
		verandah	1	3.00	1.60		4.80			
		office/sick	1	3.00	3.35		10.05			
		dinning	1	5.00	7.60		38.00			
		kitchen	1	3.60	5.00		18.00			
		store & wash	2	1.70	2.40		8.16			
		skirting	0.2	654.39			130.88			
							785.27	sqm	1082.00	849659.98
35	12.45	15 mm thick Table rubbed polished Granite stone slab flooring laid over 20mm (Average) thick base of cement mortar 1:4 (1 cement : 4 coarse sand) laid and jointed with grey cement slurry including rubbing and polishing etc. complete. (Area of slab should be 0.50 sqm and above)								
	12.45.1	Granite stone grey/pink								
		back+front wing corridor	2	31.30	1.80		112.68			

SN	REF	DESCRIPTION	NO	L	W	H/D	QTY	UNIT	RATE	AMOUNT
		toilet corridor	2	2.10	5.20		21.84			
		left+right wing corridor	2	1.80	22.20		79.92			
		entrance lobby	1	7.50	6.20		46.50			
							260.94	sqm	1796.00	468648.24
36	12.46	15 mm thick Table rubbed polished Granite stone slab in risers and treads of steps skirting dado and pillars laid on 12mm (Average) thick base of cement mortar 1:3 (1 cement : 3 coarse sand) and jointed with grey cement slurry including rubbing and polishing etc. complete (single stone is to be used for risers and treads of steps and width of stone for skirting and dado shall be equal to the height of skirting & dado and length of 1.0 m).								
	12.46.1	Granite stone grey/pink								
		steps	24	1.40	0.30		10.08			
		landing	1	3.00	1.50		4.50			
							14.58	sqm	1869.00	27250.02
37	13.6	15mm thick Granite work (machine cut, table rubbed & mirror polished) for kitchen platform, vanity counters, window sills and similar locations of required size laid over 20mm thick base cement mortar 1:4 (1 cement : 4 coarse sand) including joints treated with white cement mixed with matching pigment including rubbing and polishing to edge moulding to give high gloss finish.								
	13.6.1	Granite stone grey/pink								
		kitchen platform	1	3.60	0.60		2.16			
			1	3.20	0.60		1.92			
		kitchen platform, warden	1	3.30	0.60		1.98			
			1	1.80	0.60		1.08			
		washbasin top	2	3.10	0.60		3.72			
							10.86	sqm	2466.00	26780.76
38	13.17	Providing and fixing 15mm thick Granite (machine cut, table rubbed & mirror polished on both sides) for partition curtain in toilets or similar locations of required size in wall with cement mortar 1:4 (1 cement : 4 coarse sand) including cutting chase in wall and joint with wall treated with white cement mixed with matching pigment including rubbing and polishing to edge moulding to give high gloss finish.								
	13.17.1	Granite stone grey/pink								
		urinal partition	4	0.65		1.20	3.12	sqm	2111.00	6586.32
39	13.19	Extra for providing edge moulding to 15mm thick stone counters, vanities etc. including machine polishing to edge to give high gloss finish etc. complete as per design approved by Engineer-in-Charge.								
	13.19.2	Granite work								
		kitchen platform	1	3.60			3.60			
			1	3.20			3.20			
		kitchen platform, warden	1	3.30			3.30			
			1	1.80			1.80			
		urinal partition	2	3.00			6.00			
		steps	24	1.50			36.00			
		washbasin counter	2	3.10			6.20			
							60.10	metre	172.00	10337.20

SN	REF	DESCRIPTION	NO	L	W	H/D	QTY	UNIT	RATE	AMOUNT
40	13.20	Extra for fixing marble /granite stone in facade and drops of width upto 150 mm with epoxy resin based adhesive instead of cement mortar including cleaning etc. complete.								
		kitchen platform	1	3.60			3.60			
			1	3.20			3.20			
		kitchen platform, warden	1	3.30			3.30			
			1	1.80			1.80			
							11.90	metre	257.00	3058.30
41	13.21	Extra for making opening of required size & shape for wash basins/ kitchen sink in kitchen platform, vanity counters and similar location in marble/Granite/stone work including making necessary holes for pillar taps etc. including rubbing and polishing of cut edges etc. complete.								
		wash basin	6				6.00			
		sink	3				3.00			
							9.00	each	253.00	2277.00
42	11.1	Providing and making 6mm thick cement plaster of mix.								
	2	In Cement mortar 1:4 (1 cement : 4 fine sand)								
		left+right wing rooms, toilet	12	7.00	5.00		420.00			
		toilet corridor	2	2.10	5.20		21.84			
		left+right wing corridor	2	1.80	22.20		79.92			
		back+front wing corridor	2	31.30	1.80		112.68			
		back wing rooms	3	7.00	6.00		126.00			
		front wing, bed room	2	3.30	3.60		23.76			
		passage	1	6.10	1.20		7.32			
		kitchen	1	3.30	2.40		7.92			
		store	1	1.20	2.40		2.88			
		toilet	1	2.20	1.20		2.64			
			1	2.40	1.20		2.88			
		hall	1	3.00	6.00		18.00			
		verandah	1	3.00	1.60		4.80			
		office/sick room	1	3.00	3.40		10.20			
		entrance	1	7.50	6.20		46.50			
		dinning	1	5.00	7.60		38.00			
		kitchen	1	3.60	5.00		18.00			
		store & wash	2	1.70	2.40		8.16			
		waist slab	1	4.1	1.4		5.74			
			1	3	1.4		4.20			
		staircase tower	1	3.00	3.80		11.40			
		CHHAJJA, left-right wing, room-windows	10	1.90	0.60	0.10	1.14			
		toilet	2	8.00	0.60	0.10	0.96			
			2	5.20	0.60	0.10	0.62			
		back wing, room-windows	2	1.90	0.60	0.10	0.23			
			2	3.70	0.60	0.10	0.44			
		front wing windows	1	11.80	0.60	0.10	0.71			
			1	12.40	0.60	0.10	0.74			
		kitchen, wash	2	1.00	0.60	0.10	0.12			
		corridor	2	27.30	0.60	0.10	3.28			
			2	20.60	0.60	0.10	2.47			
		LOFT, room	20	1.00	0.60	0.10	1.20			
		store shelf	4	2.40	0.60	0.10	0.58			
			4	1.50	0.60	0.10	0.36			
			4	0.80	0.60	0.10	0.19			
		store shelf, warden	4	1.20	0.60	0.10	0.29			
			4	1.95	0.60	0.10	0.47			
							986.64	sqm	87.00	85837.68

SN	REF	DESCRIPTION	NO	L	W	H/D	QTY	UNIT	RATE	AMOUNT
43	11.2	Providing and making 12mm thick cement plaster of mix:								
	4	In Cement Mortar 1:6 (1 cement : 6 fine sand)								
		left + right wing rooms	12	7.00		3.60	302.40			
			20	5.00		3.60	360.00			
		toilet	2	7.00		3.60	50.40			
			4	5.00		3.60	72.00			
		partition walls	4	3.80		2.40	36.48			
			8	1.20		2.40	23.04			
		toilet corridor	2	2.10		3.60	15.12			
			2	5.20		3.60	37.44			
		back wing rooms	3	6.00		3.60	64.80			
			4	7.00		3.60	100.80			
		back corridor	1	27.10		3.60	97.56			
		front wing, bed	4	3.30		3.60	47.52			
			2	3.60		3.60	25.92			
		ots, kitchen	4	3.30		3.60	47.52			
			2	2.40		3.60	17.28			
		toilet	2	1.20		3.60	8.64			
		store	2	1.20		3.60	8.64			
			1	2.40		3.60	8.64			
		toilet	2	1.20		3.60	8.64			
			1	2.40		3.60	8.64			
		hall	2	3.00		3.60	21.60			
			1	6.00		3.60	21.60			
		verandah	1	1.60		3.60	5.76			
		entrance	1	7.50		3.60	27.00			
			2	6.20		3.60	44.64			
			2	1.60		3.60	11.52			
		staircase	1	4.00		3.60	14.40			
		office/sick	2	3.00		3.60	21.60			
			1	3.35		3.60	12.06			
		dinning	2	5.00		3.60	36.00			
			1	7.60		3.60	27.36			
		kitchen	2	3.60		3.60	25.92			
			1	5.00		3.60	18.00			
		store, wash	2	1.70		3.60	12.24			
			2	2.40		3.60	17.28			
		staircase tower	2	3.00		2.60	15.60			
			2	7.60		2.60	39.52			
							1713.58	sqm	91.50	156792.57
44	11.3	Providing and making 15mm thick cement plaster on the rough side of single or half brick wall of mix:								
	4	In Cement Mortar 1:6 (1 cement : 6 fine sand)								
		left + right wing rooms	8	7.00		3.60	201.60			
		toilet	2	7.00		3.60	50.40			
		toilet partition	12	1.20		2.40	34.56			
			12	1.50		2.40	43.20			
		corridor	2	31.10		3.60	223.92			
		back wing, room	3	6.00		3.60	64.80			
			2	7.00		3.60	50.40			
		front corridor	2	12.20		3.60	87.84			
		front wing, bed	2	3.60		3.60	25.92			
		ots, kitchen, store	3	2.40		3.60	25.92			
		toilet	1	2.20		3.60	7.92			
		passage	2	6.10		3.60	43.92			
		hall	1	6.00		3.60	21.60			
		verandah	1	1.60		3.60	5.76			
		entrance	1	7.50		3.60	27.00			
		staircase	1	3.00		3.60	10.80			

SN	REF	DESCRIPTION	NO	L	W	HT	EXT	UNIT	RATE	AMOUNT
			1	5.00		3.50	18.00			
		offset/side	1	3.35		3.50	12.00			
		drawing	1	7.60		3.50	27.35			
		kit hole	1	5.00		3.50	18.00			
		clim, wash	2	1.70		3.50	12.24			
			2	2.40		3.50	17.25			
		deduct beam D1	1	2.00		3.50	-6.00			
		D2	5	1.20		2.10	-12.60			
		D3	14	1.00		2.10	-29.40			
		D4	5	0.90		2.10	-9.45			
		D5	14	0.75		2.10	-29.40			
		W1	21	1.50		1.30	-40.95			
		W2	4	1.00		1.70	-6.80			
		WK	4	1.50		0.90	-5.40			
		V	16	0.90		0.60	-9.72			
							888.13	sqm	107.16	95129.91
45	11.8	Providing and making 15mm thick cement plaster in two coats with under layer of 12mm thick plaster 1:5 (1 cement : 5 fine sand) and top layer of 6mm thick with cement plaster 1:3 (1 cement : 3 fine sand) finished rough with sponge.								
		outer face, building	1	210.00		5.50	1155.00			
		staircase tower	2	8.00		2.50	41.50			
			2	3.40		2.50	17.68			
		deduct door	1	1.00		2.10	-2.10			
		inner face of parapet	1	280.00		0.90	252.00			
							1464.18	sqm	157.00	244518.00
46	12.3	Cement concrete flooring with cement concrete 1:2:4 (1 cement : 2 coarse sand : 4 graded stone aggregate 20mm) finished with a floating coat of neat cement.								
	12.3.2	50 mm thick								
		Slab area					1185.00	sqm	254.00	300960.00
47	14.13	Providing and applying 2mm thick ready mix exterior grade approved make putty (like Birla wall care, Alltek Superfine W/R of (NCL), Asian, ICI, Nerolac, J.K. wall putty) on walls to make the surface smooth and even.								
		6 mm plaster					986.64			
		12 mm plaster					1713.58			
		15 mm plaster					888.13			
		18 mm plaster					1464.18			
						TOTAL:	5052.53	sqm	94.50	477464.00
48	14.12	Applying one coat of cement primer on wall surface (applied @ 0.80 ltrs/10 sqm) complete.					5052.53	sqm	23.00	116208.00
49	14.11	Wall painting with acrylic luxury emulsion (plastic) paint of required shade to give an even shade.								
	14.11.1	On new work (two or more coats)								
		6, 12 & 15 mm plaster					3588.35	sqm	52.50	188388.00
50	14.16	Painting exterior surface with PREMIUM ACRYLIC SMOOTH exterior paint of required shade as per manufacturer's specifications to give protective and decorative finish including cleaning washing of surface etc. complete with:								
	14.16.1	On new work (Two or more coats applied @ 1.43 ltr/ 10 sqm over and including priming coat of exterior primer applied @ 2.20 kg/ 10 sqm)								

SN	REF	DESCRIPTION	NO	L	W	H/D	QTY	UNIT	RATE	AMOUNT
		18 mm plaster					1464.18	sqm	74.50	109081.41
51	14.22	Painting on new work (two or more coats) to give an even shade with								
	2	Premium synthetic enamel paint								
		W1								
		W2	21	1.50		1.30	40.95			
		WK	4	1.00		1.70	6.80			
		V	4	1.50		9.00	64.00			
		collopsible gate	18	0.90		0.60	9.72			
			1	2.00		3.00	6.00			
							117.47	sqm	47.00	5521.09
52	12.36	Chequered terrazzo tiles 22 mm thick with graded marble chips of size upto 8mm in floors on 25mm thick bed of cement mortar 1:6 (1 cement : 6 coarse sand) jointed with neat cement slurry mixed with pigment to match the shade of tiles including grinding rubbing and polishing complete.								
	1	Light shade using white cement								
		Porch	1	7.50	5.10		38.25	sqm	799.00	30561.75
Total as per SOR									Rs.	12452316.45
SAY									Rs.	12452000.00



Assistant Engineer
Tribal Develop.
Raigarh (C.G.)

DETAILED ESTIMATE FOR 50 BED ASHRAM BHAVAN

FOR TRIBAL DEVELOPMENT DEPARTMENT

AS PER PWD BUILDING SOR, w.e.f. 01.01.2015

SANITARY AND WATER SUPPLY

SN	REF	DESCRIPTION	NO	L	W	H/D	QTY	UNIT	RATE	AMOUNT
1	18.2	Providing and fixing vitreous china water closet squatting pan (Indian type) including cutting and making good the walls and floors wherever required								
	18.2.3	White Orissa pattern W.C. pan of size 580x440 mm	6				6.00	each	1440.00	8640.00
2	18.4	Providing and fixing vitreous china water closet (European type W.C. pan) with white ISI marked plastic seat and lid, 10 litre low level white P.V.C. flushing cistern (same colour), conforming to IS : 7231, with all fittings and fixtures complete including cutting and making good the walls and floors wherever required :								
	18.4.1	White pedestal type	2				2.00	each	2882.00	5764.00
3	18.8	Providing and fixing vitreous china 10 litre (full flush) capacity controlled flush low level cistern with all fittings complete.								
	18.8.1	White	6				6.00	each	1334.00	8004.00
4	18.9	Providing and fixing ISI marked plastic seat with lid for pedestal type W.C. pan complete:								
	18.9.1	White/ black	2				2.00	each	620.00	1240.00
5	18.13	Providing and fixing white vitreous china urinal basin with waste fitting as per IS : 2556, and other couplings in C.P. brass complete:								
	18.13.1	Flat back half stall urinal of size 460x380x250mm	8				8.00	each	1776.00	14208.00
6	18.17	Providing and fixing vitreous china wash basin with C.I. brackets, 32 mm C.P. brass waste of standard pattern, including painting of brackets, cutting and making good the walls wherever required :								
	18.17.1	White Size 550x450 mm	15				15.00	each	1430.00	21450.00
7	18.21	Providing and fixing Stainless Steel A ISI 304 (18/8) kitchen sink with drain board as per IS 13083 with C.I. brackets and stainless steel plug 40 mm including painting of fittings and brackets, cutting and making good the walls wherever required :								
	18.21.1	1145x510 mm bowl size 560x410x241 mm	2				2.00	each	11767.00	23534.00
8	18.25	Providing and fixing flexible P.V.C. waste pipe for sink or wash basin including P.V.C. waste fittings complete.								
	18.25.2	40 mm dia	2				2.00	each	88.50	177.00
9	18.29	Providing and fixing 600x450 mm beveled edge 4mm mirror of superior glass (of approved quality) complete with 6 mm thick hard board ground fixed to wooden cleats with C.P. brass screws and washers complete.	15				15.00	each	599.00	8985.00
10	18.33	Providing and fixing M.S. holder-bal clamps of approved design to Sand Cast iron/cast iron (spun) pipe embedded in and including cement concrete blocks 10x10x10cm of 1:2:4 mix (1 cement : 2 coarse sand : 4 graded stone aggregate 20mm nominal size) including cost of cutting holes and making good the walls etc. :								
	18.33.1	For 100 mm dia pipe	30				30.00	each	85.50	2565.00
	18.33.2	For 75 mm dia pipe	30				30.00	each	83.00	2490.00

SN	REF	DESCRIPTION	NO	L	W	H/D	QTY	UNIT	RATE	AMOUNT
11	18.34	Providing and fixing sand cast iron S&S band with access door of required degree as per IS : 1729, insertion rubber washer 3 mm thick, bolts and nuts:								
	18.34.1	100 mm dia								
	18.34.2	75 mm dia	40				40.00	each	418.00	16720.00
			30				30.00	each	316.00	9480.00
12	18.54	Providing lead caulked joints to sand cast iron/centrifugally cast (spun) iron pipes and fittings of diameter:								
	18.54.1	100 mm	8				8.00	each	228.00	1824.00
13	18.76	Providing and fixing on wall face or under floor UV stabilized Unplasticised Rigid PVC pipes (single socketed) having 3.2mm wall thickness conforming to IS : 13592 (4kg/sqcm) including required couplers, jointing with seal ring conforming to IS : 5382 leaving 10 mm gap for thermal expansion etc complete:								
	18.76.2	110 mm dia pipe.	1	220.00			220.00	metre	267.00	58740.00
14	18.77	Providing and fixing on wall face UV stabilized Unplasticised - PVC moulded fittings/ accessories having 3.2mm wall thickness for Rigid PVC pipes conforming to IS : 13592 (heavy) jointing with seal ring conforming to IS : 5382 leaving 10 mm gap for thermal expansion.								
	18.77.1	Tee/ Tee with door/ Bend 45°/ Bend 90°								
	18.77.1.2	110 mm	86				86.00	each	154.00	13244.00
	18.77.5	P trap 110mmx110mm long	15				15.00	each	227.00	3405.00
	18.77.6	Nahani trap 110x75mm	15				15.00	each	90.50	1357.50
	18.77.7	Multi floor trap 110	15				15.00	each	122.00	1830.00
15	19.7	Providing and fixing on wall surface G.I. pipes medium class complete with G.I. fittings and clamps, including cutting, making good the walls etc. and testing of joints complete:								
	19.7.1	15 mm dia. nominal bore	1	35.00			35.00	metre	149.00	5215.00
	19.7.2	20 mm dia. nominal bore	1	15.00			15.00	metre	185.00	2775.00
	19.7.3	25 mm dia. nominal bore	1	15.00			15.00	metre	258.00	3870.00
	19.7.4	32 mm dia. nominal bore	1	55.00			55.00	metre	318.00	17490.00
	19.7.5	40 mm dia. nominal bore	1	22.00			22.00	metre	364.00	8008.00
	19.7.6	50 mm dia. nominal bore	1	40.00			40.00	metre	471.00	18840.00
16	19.14	Providing and fixing 15 mm nominal bore C.P. brass fittings of approved make and conforming to IS:8931 including C.P. brass extension if required:								
	19.14.1	Bib cock (400 grams)	30				30.00	each	382.00	11460.00
	19.14.3	Long body bib cock (500 grams)	8				8.00	each	426.00	3408.00
	19.14.5	Two way bib cock (800 grams)	8				8.00	each	708.00	5664.00
	19.14.6	Stop cock (concealed) (600 grams)	8				8.00	each	494.00	3952.00
	19.14.7	Angle valve for basin mixer and geyser points (450 grams)	12				12.00	each	382.00	4584.00
	19.14.8	Basin mixer pillar tap with spout (1000 grams)	15				15.00	each	1248.00	18720.00
	19.14.13	Toilet paper holder	8				8.00	each	248.00	1984.00
	19.14.14	Soap dish plate	20				20.00	each	163.00	3260.00
	19.14.15	Shower rose (revolving type) (150mm)	8				8.00	each	269.00	2152.00
	19.14.16	Towel rail (600mm long x 20mm dia)	20				20.00	each	338.00	6760.00
	19.14.18	Wall mixer (telephonic type) with crutch arrangement for hand shower (1400gms)	15				15.00	each	1764.00	26460.00
17	19.15	Providing and fixing stainless steel drain jali of approved make/quality.	18				18.00	each	51.00	918.00
18	19.18	Providing and fixing gun metal non- return valve (horizontal type) of approved quality (screwed end) :								

SN	REF	DESCRIPTION	NO	L	W	H/D	QTY	UNIT	RATE	AMOUNT
	19.18.3	40 mm nominal lean								
	19.18.4	50 mm nominal lean	6				6.00	each	688.00	4128.00
			4				4.00	each	993.00	3972.00
19	19.31	Providing and placing in position C1 sluice valves category 'A' (Make: Kabeckor Bros Ltd, Italian Valves Co (FVC), Farness Engineers Pvt Ltd, WAG) (with cap) complete								
	19.31.1	100 mm diameter	6				6.00	each	3429.00	20574.00
20	19.42	Providing and placing on terrace (at all floor levels) polyethylene water storage tank ISI - 12701 marked with cover and suitable locking arrangement and making necessary holes for inlet, outlet and overflow pipes but without fittings and the base support for tank	1	5000.00			5000.00	litre	7.30	36500.00
21	19.47	Constructing masonry Chamber 30x30x50 cm, inside with modular well burnt clay bricks of 35 kg/ cm ² in cement mortar 1:4 (1 cement : 4 coarse sand) for stop cock, with C1 surface box 100x100 x75 mm (inside) with hinged cover fixed in cement concrete slab 1:2:4 mix (1 cement : 2 coarse sand : 4 graded stone aggregate 20 mm nominal size) necessary excavation foundation concrete 1:5:10 (1 cement : 5 fine sand : 10 graded stone aggregate 40mm nominal size) and inside plastering with cement mortar 1:3 (1 cement : 3 coarse sand) 12mm thick finished with a floating coat of neat cement complete as per standard design	12				12.00	each	754.00	9048.00
22	19.48	Constructing masonry Chamber 60x60x75 cm, inside with modular well burnt clay bricks of 35 kg/ cm ² in cement mortar 1:4 (1 cement : 4 coarse sand) for sluice valve, with C1 surface box 100mm top diameter, 160 mm bottom diameter and 160 mm deep (inside) with chained bottom RCC top slab 1:2:4 mix (1 cement : 2 coarse sand : 4 graded stone aggregate 20mm nominal size) necessary excavation foundation concrete 1:5:10 (1 cement : 5 fine sand : 10 graded stone aggregate 40 mm nominal size) and inside plastering with cement mortar 1:3 (1 cement : 3 coarse sand) 12 mm thick finished with a floating coat of neat cement complete as per standard design	14				14.00	each	4644.00	65016.00
23	20.2	Providing and laying cement concrete 1:5:10 (1 cement : 5 coarse sand : 10 graded stone aggregate 40 mm nominal size) all round S.W. pipes including bed concrete 150mm thick as per standard design								
	20.2.2	150 mm diameter S.W. pipe	1	100.00			100.00	metre	436.00	43600.00
24	20.3	Providing and fixing square mouth S.W. gully trap grade 'A' complete with C1 gating brick masonry chamber with well burnt modular clay bricks crushing strength not less than 35kg/cm ² , water tight C1 cover with frame of 300 x300 mm size (inside) the weight of cover to be not less than 4.50 kg and frame to be not less than 2.70 kg as per standard design								
	20.3.1	100x100 mm size P type	18				18.00	each	1339.00	24102.00

DETAILED ESTIMATE FOR 50 BED ASHRAM BHAVAN

FOR TRIBAL DEVELOPMENT DEPARTMENT

AS PER PWD BUILDING SOR, w.e.f. 01.01.2015

SEPTIC TANK

SN	REF	DESCRIPTION	NO	L	W	H/D	QTY	UNIT	RATE	AMOUNT
1	1.1	Excavation for all types and sizes of foundations, trenches and drains or for any other purpose including disposal of excavated stuff upto 1.5 m lift and lead upto 50m (at least 5m away from the excavated area), including dressing and leveling of pits.								
	1	In all types of soils.	1	5.40	2.40	2.10	27.22	cum	185.00	5034.96
2	1.6	Extra for every additional lift of 1.5 m or part thereof.								
	1	All types of soils.	1	5.40	2.40	0.60	7.78	cum	26.50	206.06
3	3.1	Providing and laying nominal mix plain cement concrete with crushed stone aggregate using concrete mixer in all works upto plinth level excluding cost of form work.								
	2	1:4:8 (1 cement : 4 coarse sand : 8 graded stone aggregate 40mm nominal size).	1	5.40	2.40	0.20	2.59	cum	2659.00	6892.13
4	3.2	Providing and laying nominal mix reinforced cement concrete with crushed stone aggregate using concrete mixer in all works upto plinth level excluding cost of form work.								
	1	1:1½:3 (1 cement : 1½ coarse sand : 3 graded stone aggregate 20mm nominal size).	1	5.40	2.40	0.15	1.94	cum	4163.00	8092.87
5	3.12	Providing and placing in position reinforcement for R.C.C. work including straightening, cutting, bending, binding etc. complete as per drawings including cost of binding wire in foundation and plinth all complete.								
	1	Thermo-Mechanically treated bars FE 415								
		Steel @ 110 Kg	1	110.00	1.94	CUM	213.84	kg	54.50	11654.28
6	2.1	Providing and fixing form work including centring, shuttering, strutting, staging, propping bracing etc. complete and including its removal at all levels, for:								
	7	Suspended floors, roofs, access platform, balconies (plain surfaces) and shelves (cast in situ)	1	5.40	2.40		12.96	sqm	235.00	3045.60
7	7.5	Brick work with modular fly-ash lime bricks (FaLG Bricks) conforming to IS:12894-2002 of class designation 4.0 in foundation and plinth in:								
	4	Cement Mortar 1:6 (1 cement : 6 coarse sand)	2	5.40	0.20	2.00	4.32			
			2	2.40	0.20	2.00	1.92			
						TOTAL:	6.24	cum	3263.00	20361.12
8	11.3	Providing and making 15mm thick cement plaster on the rough side of single or half brick wall of mix:								
	11.3.4	In Cement Mortar 1:6 (1 cement : 6 fine sand)	2	5.40		2.00	21.60			
			2	2.40		2.00	9.60			
			2	5.20	2.40		24.96			
						TOTAL:	56.16	sqm	107.00	6009.12
As per SOR 01.01.2015 Total Amount									Rs:	61296.14
SAY									Rs:	61000.00

DETAILED ESTIMATE FOR 50 BED ASHRAM BHAVAN

FOR TRIBAL DEVELOPMENT DEPARTMENT

AS PER PWD BUILDING SOR, w.e.f. 01.01.2015

BORE WELL

SN	REF	DESCRIPTION	NO	L	W	H/D	QTY	UNIT	RATE	AMOUNT
1	21.1	Boring/drilling bore well perfectly vertical for the specified depth suitable to receive required dia for casing/ strainer pipe, by suitable method prescribed in IS: 2800 (part I), including collecting samples from different strata, preparing and submitting strata chart/bore log, including hire & running charges of all equipments, tools, plants & machineries required for the job, all complete as per direction of Engineer-in-charge upto 90 metre depth below ground level.								
	21.1.1	All types of soil								
	21.1.1.3	150 mm dia								
	21.1.2	Rocky strata including Boulders	1	30.00			30.00	metre	339.00	10170.00
	21.1.2.3	150 mm dia								
			1	60.00			60.00	metre	396.00	23760.00
2	21.2	Boring/drilling bore well perfectly vertical for the specified depth suitable to receive required dia for casing/ strainer pipe, by suitable method prescribed in IS: 2800 (part I), including collecting samples from different strata, preparing and submitting strata chart/bore log, including hire & running charges of all equipments, tools, plants & machineries required for the job, all complete as per direction of Engineer-in-charge beyond 90 metre & upto 150 metre depth below ground level.								
	21.2.1	All types of soil								
	21.2.1.3	150 mm dia								
	21.2.2	Rocky strata including Boulders	1	35.00			35.00	metre	371.00	12985.00
	21.2.2.3	150 mm dia								
			1	25.00			25.00	metre	424.00	10600.00
3	21.4	Supplying, assembling, lowering and fixing in vertical position in bore well unplasticized PVC medium well screen (RMS) slotted pipes with ribs, conforming to IS: 12818, including hire & labour charges, fittings & accessories etc. all complete, for all depths, as per direction of Engineer-in-charge.								
	21.4.3	150 mm nominal size dia	1	20.00			20.00	metre	546.00	10920.00
4	21.11	Providing and fixing suitable size threaded mild steel cap or spot welded plate to the top of bore well housing/ casing pipe, removable as per requirement, all complete for bore well of.								
	21.11.3	150 mm dia	1				1.00	each	217.00	217.00
5	21.12	Providing and fixing M.S. clamp of required dia to the top of casing/ housing pipe of tube well as per IS: 2800 (part I), including necessary bolts & nuts of required size complete.								
	21.12.3	150 mm clamp	1				1.00	each	1055.00	1055.00
6	21.17	Carrying out the resistivity survey by VES method using Schlumberger configuration for locating the proper spot for drilling of tube well within the selected habitation, including photography, interpretation of resistivity data and submission of report in the desired format along with resistivity readings, necessary graph and photographs. (only successful point is payable)	1				1.00	point	1502.00	1502.00
Total as per SOR									Rs.	71209.00
SAY									Rs.	71000.00

DETAILED ESTIMATE FOR 50 BED ASHRAM BHAVAN

FOR TRIBAL DEVELOPMENT DEPARTMENT

AS PER PWD BUILDING SOR, w.o.f. 01.01.2015

SUBMERSIBLE PUMP

SN	REF	DESCRIPTION	NO	L	W	H/D	QTY	UNIT	RATE	AMOUNT
1	26.3	Supplying, installation, testing and commissioning of submersible pump set for water supply system with submersible motor directly coupled to multi-stage submersible pump of specified discharge capacity head, delivery size in existing bore well including 2 sets of suitable size holding clamps made out of 50 mm X 6 mm MS flat, connection with suitable submersible cable of standard length etc. as required.								
	26.3.4	3.0 HP, three phase	1				1.00	Each	22669.00	22669.00
2	26.4	Supplying and fixing of following sizes 'B' class G I pipe with welded steel flange of suitable size at both the end of every pipe length, fixing with submersible pump and lowering with the pump in the bore well including necessary rubber gasket, nuts & bolts etc. as required.								
	26.4.4	50 mm dia	1	110.00			110.00	Metre	382.00	42020.00
3	26.11	Supply, installation, testing and commissioning of 1.3 HP 1 phase submersible motor starter cum control wall/ floor mounted type made out of not less than 1.6 mm thick MS sheet and comprising of following panel mounting switchgears there in including connection inter-connection etc. as required.								
		a) Phase indicating lamps with fuses and toggle switches 1 set								
		b) 1/2/3 HP 1 phase DOL starter with over load and no volt relay 1 No								
		c) 32 A "C" curve TPMCB 1 No								
		d) Voltmeter 0-250 V 1 set								
		e) Ammeter 0-10 A 1 set.	1				1.00	Each	4125.00	4125.00
4	26.12	Supplying and fixing M.S. clamp 50 cm long made of 50mmx5mm thick M.S. Flat for holding the pipes and submerable pump set as required.	1				1.00	metre	314.00	314.00
5	26.13	Supplying and fixing 300 mm dia 2 mm thick M.S. sheet cover with 3 cm edge in two past on tube well bore pipe as required	1				1.00	each	393.00	393.00
6	26.14	Supplying, laying and fixing following size submersible cable along with GI/PVC/HDFC pipe line of laid in ground etc as required.								
	26.14.3	3x4.0 sqmm	1	140.00			140.00	Metre	99.00	13860.00
Total Amount as per SOR Rs:										83381.00
SAY Rs.										83000.00

Assistant Engineer
Tribal Devel.
Rajgarh (C.G.)

DETAILED ESTIMATE FOR 50 BED ASHRAM BHAVAN

FOR TRIBAL DEVELOPMENT DEPARTMENT

AS PER PWD BUILDING SOR, w.e.f. 01.01.2015

SUMP WELL

SN	REF	DESCRIPTION	NO	L	W	H/D	QTY	UNIT	RATE	AMOUNT
1	1.1	Excavation for all types and sizes of foundations, trenches and drains or for any other purpose including disposal of excavated stuff upto 1.5 m lift and load upto 50m (at least 5m away from the excavated area), including dressing and leveling of pits.								
	1	In all types of soils	1	5.40	2.40	2.10	27.22	cum	185.00	5034.96
2	1.0	Extra for every additional lift of 1.5 m or part thereof.								
	1	All types of soils	1	5.40	2.40	0.60	7.78	cum	25.50	206.06
3	3.1	Providing and laying nominal mix plain cement concrete with crushed stone aggregate using concrete mixer in all works upto plinth level excluding cost of form work.								
	2	1:4:8 (1 cement : 4 coarse sand : 8 graded stone aggregate 40mm nominal size)	1	5.40	2.40	0.20	2.59	cum	2659.00	6892.13
4	3.2	Providing and laying nominal mix reinforced cement concrete with crushed stone aggregate using concrete mixer in all works upto plinth level excluding cost of form work.								
	1	1:1½:3 (1 cement : 1½ coarse sand : 3 graded stone aggregate 20mm nominal size)	1	5.40	2.40	0.16	2.07	cum	4163.00	8632.40
5	3.12	Providing and placing in position reinforcement for R.C.C. work including straightening, cutting, bending, binding etc. complete as per drawings including cost of binding wire in foundation and plinth all complete.								
	1	Thermo-Mechanically treated bars FE 415								
		Steel @ 110 Kg	1	110.00	0.15	CUM	17.60	kg	54.50	959.20
6	2.1	Providing and fixing form work including centring, shuttering, strutting, staging, propping bracing etc. complete and including its removal at all levels, for:								
	7	Suspended floors, roofs, access platform, balconies (plain surfaces) and shelves (cast in situ)	1	5.40	2.40		12.96	sqm	235.00	3045.60
7	7.5	Brick work with modular fly-ash lime bricks (FaLG Bricks) conforming to IS:12894-2002 of class designation 4.0 in foundation and plinth in:								
	4	Cement Mortar 1:6 (1 cement : 6 coarse sand)	2	5.40	0.20	2.00	4.32			
			2	2.40	0.20	2.00	1.92			
						TOTAL:	6.24	cum	3263.00	20361.12
8	11.3	Providing and making 15mm thick cement plaster on the rough side of single or half brick wall of mix:								
	11.3.4	In Cement Mortar 1:6 (1 cement : 6 fine sand)								
			2	5.40		2.00	21.60			
			2	2.40		2.00	9.60			
			2	5.20	2.40		24.96			
						TOTAL:	56.16	sqm	107.00	6009.12
9	12.7	Providing and fixing ceramic glazed wall tiles conforming to IS : 15622 of approved make, colours, shades and size on wall and dados over 12 mm thick bed of cement Mortar 1:3 (1 cement : 3 coarse sand) and jointing with grey cement slurry @ 3.3kg per sqm including pointing in white cement mixed with matching pigment complete.								
	12.7.1	Size upto 200x300mm	2	5.40		2.00	21.60			
			2	2.40		2.00	9.60			

[illegible]

DETAILED ESTIMATE FOR 50 BED ASHRAM BHAVAN

FOR TRIBAL DEVELOPMENT DEPARTMENT

AS PER PWD BUILDING SOR, w.e.f. 01.01.2015

RAIN WATER HARVESTING

SN	REF	DESCRIPTION	NO	L	W	H/D	QTY	UNIT	RATE	AMOUNT
1	1.1	Excavation for all types and sizes of foundations, trenches and drains or for any other purpose including disposal of excavated stuff upto 1.5 m lift and load upto 50m (at least 5m away from the excavated area), including dressing and leveling of pits.								
	1	In all types of soils	1	2.50	2.50	2.50	15.63	cum	185.00	2890.63
2	1.8	Extra rate for quantity of work executed in or under foul condition	1	2.50	2.50	1.00	6.25	cum	44.00	275.00
3	21.9	Gravel packing in tube well construction in accordance with IS: 4097, including providing gravel fine/ medium/ coarse, in required grading & sizes as per actual requirement, all complete as per direction of Engineer in-charge.								
		GRAVEL	1	2.50	2.50	0.65	4.06			
		brick bed	1	2.50	2.50	0.50	3.13			
		coarse sand	1	2.50	2.50	0.30	1.88			
		fine sand	1	2.50	2.50	0.30	1.88			
							10.94	cum	1048.00	11462.50
4	21.2	Boring/drilling bore well perfectly vertical for the specified depth suitable to receive required dia for casing/ strainer pipe, by suitable method prescribed in IS: 2800 (part I), including collecting samples from different strata, preparing and submitting strata chart/bore log, including hire & running charges of all equipments, tools, plants & machineries required for the job, all complete as per direction of Engineer-in-charge beyond 90 metre & upto 150 metre depth below ground level.								
	21.2.1	All types of soil								
	21.2.1.3	150 mm dia. metre 339.00	3	3.00			9.00	metre	371.00	3339.00
5	21.4	Supplying, assembling, lowering and fixing in vertical position in bore well unplasticized PVC medium well screen (RMS) slotted pipes with ribs, conforming to IS: 12818, including hire & labour charges, fittings & accessories etc. all complete, for all depths, as per direction of Engineer-in-charge.								
	21.4.3	150 mm nominal size dia.	1	3.50			3.50	metre	546.00	1911.00
6	21.18	Providing and fixing filter of minimum 100 litre capacity for roof top rain water harvesting through tube well consisting of two layered HDPE tank with five layers (each layers of minimum 100 mm) consist of coarse sand, 4mm, 6mm, 8mm & 12 mm gravels with stainless steel wire mesh fixed between each layer with suitable length and sufficient numbers of 110 mm dia PVC pipe pieces in the bottom of tank to support the above layer including fixing of inlet and outlet P.V.C. pipe of required diameter upto 2 metre length on each side, Cement Concrete platform of required size complete as directed by Engineer in-charge. (excluding cost of tubewell and inlet and outlet pipe beyond 2 metre)	1	200.00			200.00	litre	18.50	3700.00
7	21.19	Providing and fixing 80-100 mm dia PVC ball valve for inlet/ outlet of rain water harvesting pipe and filter.	2				2.00	each	644.00	1288.00

DETAILED ESTIMATE FOR 50 BED ASHRAM BHAVAN

FOR TRIBAL DEVELOPMENT DEPARTMENT

AS PER PWD BUILDING SOR, w.e.f. 01.01.2015

CHAUKIDAR QUARTER

SN	REF	DESCRIPTION	NO	L	W	H/D	QTY	UNIT	RATE	AMOUNT
1	1.1	Excavation for all types and sizes of foundations, trenches and drains or for any other purpose including disposal of excavated stuff upto 15 m lift and load upto 50m (at least 5m away from the excavated area), including dressing and leveling of pits, in all types of soils.								
	1									
		column	8	1.20	1.20	1.20	13.82			
			2	8.30	0.25	0.20	0.83			
			4	3.30	0.25	0.20	0.66			
			1	1.80	0.25	0.20	0.09			
							15.40	cum	185.00	2849.74
2	1.17	Filling from available excavated stuff (Excluding rock) in trenches, plinth, sides of foundation etc. in layers not exceeding 20cm in depth consolidating each deposited layer by ramming and watering with a load upto 50 M. and lift upto 1.5 M.								
							15.40	cum	65.00	1001.20
3	1.18	Providing and filling in plinth with sand/ Crusher dust and hard moorum under floor in layers not exceeding 20cm in depth consolidating each deposited layer by ramming and watering, including dressing etc. complete.								
		room	1	3.30	2.10	0.90	6.24			
		bed room	1	3.30	3.60	0.90	10.69			
		kitch	1	2.20	1.80	0.90	3.56			
		toilet	1	0.90	1.80	0.90	1.17			
							21.66	cum	371.00	8035.64
4	3.1	Providing and laying nominal mix plain cement concrete with crushed stone aggregate using concrete mixer in all works upto plinth level excluding cost of form work.								
	3	1:3:6 (1 cement : 3 coarse sand : 6 graded stone aggregate 40mm nominal size)								
		column	8	1.20	1.20	0.20	2.30			
			2	8.30	0.25	0.10	0.42			
			4	3.30	0.25	0.10	0.33			
			1	1.80	0.25	0.10	0.05			
		flooring, room	1	3.30	2.10	0.10	0.69			
		bed room	1	3.30	3.60	0.10	1.19			
		kitchen	1	2.20	1.80	0.10	0.40			
		toilet & hand wash	1	0.90	1.80	0.10	0.16			
							5.53	cum	2970.00	16433.01
5	3.2	Providing and laying nominal mix reinforced cement concrete with crushed stone aggregate using concrete mixer in all works upto plinth level excluding cost of form work.								
	1	1:1½:3 (1 cement : 1½ coarse sand : 3 graded stone aggregate 20mm nominal size)								
		C1	8	1.00	1.00	0.15	1.20			
		trapezoid- F1, A1 = (1.1 x 1.1 = 1.21), A2 = (0.35 x 0.35 = 0.12), Am = (1.1 + 0.35)²/2 x (1.1 + 0.35)² = 0.53, 1/6(A1 + A2 + 4Am) = 1.38	8	1.38		0.30	3.31			
		Column in plinth - C1	8	0.20	0.20	1.10	0.35			
		plinth beam	2	8.30	0.20	0.25	0.83			
			4	3.30	0.20	0.25	0.66			

SN	REF	DESCRIPTION	NO	L	W	H/D	QTY	UNIT	RATE	AMOUNT
		column in superstructure	1	1.80	0.20	0.25	0.09			
		intel beam	8	0.20	0.20	3.00	0.96			
			2	8.30	0.20	0.30	1.00			
			4	3.30	0.20	0.30	0.79			
		chhaga	1	1.80	0.20	0.30	0.11			
			3	1.50	0.60	0.12	0.32			
		slab beam	1	0.75	0.60	0.12	0.05			
			2	8.30	0.20	0.30	1.00			
			4	3.30	0.20	0.30	0.79			
		slab	1	1.80	0.20	0.30	0.11			
		bed room	1	3.30	2.10	0.12	0.83			
		kitchen	1	3.30	3.60	0.12	1.43			
		toilet	1	2.20	1.80	0.12	0.48			
			1	0.90	1.80	0.12	0.19			
							14.50	cum	4163.00	60366.83
6	3.4	Extra for laying PCC/RCC of any grade in superstructure above plinth level for every floor or part thereof in addition to rate for foundation and plinth:	1	14.50			14.50	cum	97.50	1413.83
7	3.12	Providing and placing in position reinforcement for R.C.C. work including straightening, cutting, bending, binding etc. complete as per drawings including cost of binding wire in foundation and plinth all complete:								
	1	Thermo-Mechanically treated bars FE 415 wt. @ 80 kg/cum,	1	14.50	80.00		1160.06	kg	54.50	63223.49
8	2.1	Providing and fixing form work including centring, shuttering, strutting, staging, propping bracing etc. complete and including its removal at all levels, for:								
	1	Foundations, footings, bases of columns plinth beam, curtain wall in any shape and size and all type of wall below plinth level.								
		Column C1	16	1.10		0.20	3.52			
			16	1.10		0.20	3.52			
		plinth beam	2	8.30	0.20		3.32			
			2	8.30	0.25		4.15			
			4	3.30	0.20		2.64			
			4	3.30	0.25		3.30			
			1	1.80	0.20		0.36			
			2	1.80	0.25		0.90			
							21.71	sqm	139.00	3017.69
5		Columns, Pillars, Piers and likes- rectangular or square in shape								
		C1	16	0.90		0.20	2.88			
			16	0.90		0.20	2.88			
			16	3.00		0.20	9.60			
			16	3.00		0.20	9.60			
							24.96	sqm	297.00	7413.12
7		Suspended floors, roofs, access platform, balconies (plain surfaces) and shelves (cast in situ)								
		room	1	3.30	2.10		6.93			
		bed room	1	3.30	3.60		11.88			
		kitchen	1	2.20	1.80		3.96			
		toilet	1	0.90	1.80		1.62			
							24.39	sqm	235.00	5731.65
8		Beams, intels, cantilevers & walls								
			2	8.30	0.20		3.32			
			2	8.30	0.20		3.32			
			4	3.30	0.20		2.64			
			4	3.30	0.20		2.64			

SN	REF	DESCRIPTION	NO	L	W	H/D	QTY	UNIT	RATE	AMOUNT
			1	1.80	0.20		0.36			
			2	1.80	0.20		0.72			
		lintel	1	30.20	0.60		18.12			
		front	1	1.50	0.60		0.90			
		side left	1	1.50	0.60		0.90			
		back	1	1.50	0.60		0.90			
			1	0.75	0.60		0.45			
		slab beam	2	8.30	0.20		3.32			
			2	8.30	0.30		4.98			
			4	3.30	0.20		2.64			
			4	3.30	0.30		3.96			
			1	1.80	0.20		0.36			
			2	1.80	0.30		1.08			
			4	3.20	0.40		5.12			
							55.73	sqm	202.00	11257.46
9	7.5	Brick work with modular fly-ash lime bricks (FaLG Bricks) conforming to IS:12894-2002 of class designation 4.0 in foundation and plinth in:								
	4	Cement Mortar 1:6 (1 cement : 6 coarse sand)								
		in plinth	2	8.00	0.20	0.90	2.88			
			2	3.30	0.20	0.90	1.19			
						A =	4.07			
		in superstructure	2	8.00	0.20	2.80	8.96			
			4	3.30	0.20	2.80	7.39			
			1	1.80	0.20	2.80	1.01			
		deduct D	3	1.00	0.20	2.10	-1.26			
		D1	1	0.75	0.20	2.10	-0.32			
		window	3	1.20	0.20	1.21	-0.87			
			1	0.90	0.20	0.60	-0.11			
						B =	14.81			
						A+B =	18.87	cum	3263.00	61585.21
10	7.6	Extra for brick work in superstructure above plinth level for every floor or part thereof in addition to rate for foundation and plinth:	1	14.81			14.81	cum	121.00	1791.50
11	8.1	Providing wood work in frames of doors, windows, clerestory windows and other frames wrought framed and fixed in position.								
	2	Sal, bijasal, bonteak, khair, haldu								
		D	3	5.10	0.13	0.07	0.14			
		D1	1	4.95	0.13	0.07	0.05			
							0.18	cum	61051.00	11250.17
12	8.12	Providing and fixing flush door shutters, conforming to IS : 2202 (Part-I), decorative type core of block board construction with frame of first class hard wood and well matched teak ply veneering with vertical grains or cross bands and face veneers on both faces of shutters excluding hinges.								
	1	40 mm. thick (single leaf)								
		D	3	0.90		2.10	5.67			
		D1	1	0.75		2.10	1.58			
							7.25	sqm	2467.00	17873.42
13	9.14	Providing and fixing steel door made of angle iron of suitable sizes with M.S. grill of approved pattern made of M.S. flats or square or round bars coat of red oxide zinc chromate primer.								
		grill wt @ 25 Kg/sqm W	3	1.20	1.20	25.00	108.00			
		V	1	0.90	0.60	25.00	13.50			
							121.50	kg	79.50	9659.25

SN	REF	DESCRIPTION	NO	L	W	H/D	QTY	UNIT	RATE	AMOUNT
14	11.1	Providing and making 6mm thick cement plaster of mix.								
	2	In Cement mortar 1:4 (1 cement : 4 fine sand)								
		room	1	3.30	2.10		6.93			
		bed room	1	3.30	3.60		11.88			
		kitchen	1	2.20	1.80		3.96			
		toilet	1	0.90	1.80		1.62			
							24.39	sqm	87.00	2121.93
15	11.2	Providing and making 12mm thick cement plaster of mix.								
	4	In Cement Mortar 1:6 (1 cement : 6 fine sand)								
		room	2	3.30		3.00	19.80			
			2	2.50		3.00	15.00			
		bed room	2	3.30		3.00	19.80			
			2	3.60		3.00	21.60			
		kitchen	2	2.20		3.00	13.20			
			2	1.80		3.00	10.80			
		toilet	2	0.90		3.00	5.40			
			2	1.80		3.00	10.80			
		deduct D	3	0.90		2.10	-5.67			
		D1	1	0.75		2.10	-1.58			
		W1	3	1.20		1.21	-4.36			
		V1	1	0.75		0.60	-0.45			
							104.35	sqm	91.50	9547.93
16	11.3	Providing and making 15mm thick cement plaster on the rough side of single or half brick wall of mix.								
	4	In Cement Mortar 1:6 (1 cement : 6 fine sand)								
			2	8.00		3.00	48.00			
			2	3.30		3.00	19.80			
							67.80	sqm	107.00	7254.60
17	12.12	Providing and laying vitrified floor tiles with soluble salt printing, of size 600x600mm with water absorption less than 0.5% and conforming to IS : 15622 of approved make, laid on 20mm thick cement mortar 1:4 (1 cement : 4 coarse sand) including grouting the joints with white cement and matching pigments etc. complete.								
		sqm	963.00							
		room	1	3.30	2.10		6.93			
		bed room	1	3.30	3.60		11.88			
		kitchen	1	2.20	1.80		3.96			
		toilet	1	0.90	1.80		1.62			
							24.39	sqm	963.00	23487.57
18	14.9	Distemping with acrylic washable distemper to give an even shade.								
	14.9.1	On new work (Two or more coats)								
		6 mm plaster	1	24.39			24.39			
		12 mm plaster	1	104.35			104.35			
							128.74	sqm	38.00	4892.08
19	14.14	Finishing walls with water proofing cement paint of required shade to give an even shade.								
	14.14.1	On new work (Two or more coats applied @ 3.84 kg/10 sqm)								
		15 mm plaster	1	67.80			67.80	sqm	41.00	2779.80
20	14.22	Painting on new work (two or more coats) to give an even shade with:								
	14.22.1	Seal synthetic enamel paint	W	6	1.20	1.20	8.64			

DETAILED ESTIMATE FOR 50 BED ASHRAM BHAVAN

FOR TRIBAL DEVELOPMENT DEPARTMENT

As per PWD Building SOR - 01.01.2015

BOUNDRY WALL

SN	REF	DESCRIPTION	NO	L	W	H/D	QTY	UNIT	RATE	AMOUNT
1	1.4	Clearing jungle including uprooting of rank vegetation, grass, brush wood, trees and saplings of girth upto 30 cm measured at a height of 1 m above ground level and removal of rubbish upto a distance of 50 m outside the periphery of the area cleared								
			1	15.25	1.20		18.30	sqm	3.70	67.71
2	1.1	Excavation for all types and sizes of foundations, trenches and drains or for any other purpose including disposal of excavated stuff upto 1.5 m lift and lead upto 50m (at least 5m leveling of pits.								
		1 In all types of soils								
		COLUMN	4	1.50	1.50	1.50	13.50			
		DOUBLE COLUMN (EXPANSION)	1	2.00	1.50	1.50	4.50			
		SOLING	1	8.95	0.30	0.20	0.54			
							18.54	cum	185.00	3429.35
3	1.18	Providing and filling in plinth with sand/ Crusher dust and hard moorum under floor in layers not exceeding 20cm in depth consolidating each deposited layer by ramming and watering, including dressing etc. complete.								
		COLUMN	4	1.50	1.50	1.50	0.10			
		DOUBLE COLUMN (EXPANSION)	1	2.00	1.50	1.50	0.10			
							0.20	cum	371.00	74.20
4	3.1	Providing and laying nominal mix plain cement concrete with crushed stone aggregate using concrete mixer in all works upto plinth level excluding cost of form work.								
		3 1:3:6 (1 cement : 3 coarse sand : 6 graded stone aggregate 40mm nominal size).								
		COLUMN	4	1.50	1.50	0.10	0.90			
		DOUBLE COLUMN (EXPANSION)	1	2.00	1.50	0.10	0.30			
		SOLING	1	8.95	0.30	0.10	0.27			
							1.47	cum	2970.00	4361.45
5	3.3	Providing and laying design mix reinforced cement concrete with crushed graded stone aggregate 20mm nominal size using batching plant, transit mixer and concrete pump, in all works upto plinth level excluding cost of form work.								
		1 M-20 Grade								
		COLUMN	4	1.40	1.40	0.20	1.57			
		DOUBLE COLUMN (EXPANSION)	1	1.80	1.40	0.20	0.50			
		COLUMN BELOW PLINTH BEAM	6	0.20	0.30	0.80	0.29			
						A	2.36			
		PLINTH BEAM	1	15.25	0.20	0.30	0.92			
		COLUMN ABOVE PLINTH BEAM	6	0.20	0.30	2.10	0.76			
						B	1.67			
						A+B	4.03	cum	4231.00	17055.16
6	3.12	Providing and placing in position reinforcement for R.C.C work including straightening, cutting, bending, binding etc complete as per drawings including cost of binding wire in foundation and plinth all complete.								
		1 Thermo-Mechanically treated bars FE 415	4.03	90.00			362.79	kg	54.50	19772.06

SN	REF	DESCRIPTION	NO	L	W	H/D	QTY	UNIT	RATE	AMOUNT
7	2.1	Providing and fixing form work including centring, shuttering, Foundations, footings, bases of columns plinth beam, curtain wall in any shape and size and all type of wall below plinth level.								
	1									
		COLUMN	16	1.40		0.20	4.48			
		DOUBLE COLUMN (EXPANSION)	2	1.80		0.20	0.72			
			2		1.40	0.20	0.56			
		COLUMN	6		1.40	0.80	6.72			
		COLUMN BELOW PLINTH BEAM	2	15.25	0.30		9.15			
							21.63	sqm	139.00	3006.57
5		Columns, Pillars, Piers and likes- rectangular or square in shape								
		COLUMN ABOVE PLINTH	6	1.00		2.10	12.60			
		COPING	2	15.25		0.05	1.53			
							14.13	sqm	297.00	4195.13
8	3.1	Providing and laying nominal mix plain cement concrete with crushed stone aggregate using concrete mixer in all works upto plinth level excluding cost of form work.								
	5	1:1½:3 (1 cement : 1½ coarse sand : 3 graded stone aggregate 20mm nominal size)								
		COPING	1	15.25	0.30	0.05	0.23	cum	4073.00	931.70
9	7.5	Brick work with modular fly-ash lime bricks (FeLG Bricks) conforming to IS:12894-2002 of class designation 4.0 in foundation and plinth in:								
	4	Cement Mortar 1:6 (1 cement : 6 coarse sand)								
		FOUNDATION	1	15.25	0.20	0.10	0.31			
		DEDUCTION	6	0.20	0.20	0.10	-0.02			
							0.28	cum	3263.00	916.90
		SUPER STRUCTURE	1	15.25	0.20	1.50	4.58			
		DEDUCTION	6	0.20	0.20	1.50	-0.36			
							4.22	cum	3384.00	14263.56
10	1.17	Filling from available excavated stuff (Excluding rock) in trenches, plinth, sides of foundation etc. in layers not exceeding 20cm in depth consolidating each deposited layer by ramming and watering with a lead upto 50 M. and lift upto 1.5 M.								
		Column	4	1.50	1.50	1.50	13.50			
		double column	1	2.10	1.50	1.50	4.73			
		deduct								
		sand filling	4	1.20	1.20	0.10	-0.58			
		double column	1	1.50	1.20	0.10	-0.18			
		column base	4	1.20	1.20	0.10	-0.58			
		double column	1	1.50	1.20	0.10	-0.18			
							16.71	cum	65.00	1086.35
11	11.2	Providing and making 12mm thick cement plaster of mix:								
	11.2.4	In Cement Mortar 1:6 (1 cement : 6 fine sand)	1	15.25		1.90	28.98			
			1	15.25		0.30	4.58			
		column	6	0.80		0.60	2.88			
							36.43	sqm	91.50	3333.35
12	11.3	Providing and making 15mm thick cement plaster on the rough side of single or half brick wall of mix:								
	11.3.4	In Cement Mortar 1:6 (1 cement : 6 fine sand)	1	15.25		1.90	28.98			
		column	6	0.20		0.60	0.72			
							29.70	sqm	107.00	3177.37

DETAILED ESTIMATE FOR 50 BED ASHRAM BHAVAN

FOR TRIBAL DEVELOPMENT DEPARTMENT

AS PER PWD BUILDING SOR, w.e.f. 01.01.2015

DRAIN

SN	REF	DESCRIPTION	NO	L	W	H/D	QTY	UNIT	RATE	AMOUNT
(ESTIMATE FOR STANDARD LENGTH OF 10 M)										
1	1.1	Excavation for all types and sizes of foundations, trenches and drains or for any other purpose including disposal of excavated stuff upto 1.5 m lift and lead upto 50m (at least 5m away from the excavated area), including dressing and leveling of pits. In all types of soils.								
	1		1	10.00	0.80	0.60	4.80	cum	185.00	888.00
2	1.26	Carriage by mechanical transport upto 5 km lead								
	1.26.1	Earth					4.80	cum	111.00	532.80
3	3.1	Providing and laying nominal mix plain cement concrete with crushed stone aggregate using concrete mixer in all works upto plinth level excluding cost of form work.								
	2	1:4:8 (1 cement : 4 coarse sand : 8 graded stone aggregate 40mm nominal size).	1	10.00	0.80	0.10	0.80	cum	2659.00	2127.20
4	3.2	Providing and laying nominal mix reinforced cement concrete with crushed stone aggregate using concrete mixer in all works upto plinth level excluding cost of form work.								
	1	1:1½:3 (1 cement : 1½ coarse sand : 3 graded stone aggregate 20mm nominal size).								
		Drain base								
		Walls	1	10.00	0.50	0.10	0.50			
		Cover	2	10.00	0.10	0.45	0.90			
			1	10.00	0.50	0.10	0.50			
							1.90	cum	4163.00	7909.70
5	1.17	Filling from available excavated stuff (Excluding rock) in trenches, plinth, sides of foundation etc. in layers not exceeding 20cm in depth consolidating each deposited layer by ramming and watering with a lead upto 50 M. and lift upto 1.5 M..	2.00	10.00	0.15	0.55	1.65	cum	65.00	107.25
6	3.12	Providing and placing in position reinforcement for R.C.C. work including straightening, cutting, bending, binding etc. complete as per drawings including cost of binding wire in foundation and plinth all complete.								
	1	Thermo-Mechanically treated bars FE 415								
		Wt of steel @ 50 kg/cum	50	1.90			95.00	kg	54.50	5177.50
7	2.1	Providing and fixing form work including centring, shuttering, strutting, staging, propping bracing etc. complete and including its removal at all levels, for:								
	1	Foundations, footings, bases of columns plinth beam, curtain wall in any shape and size and all type of wall below plinth level.								
		wall inner side	2	10.00		0.45	9.00			
		wall outer side	2	10.00		0.55	11.00			
		cover	1	10.00	0.30		3.00			
		base sides	2	10.00		0.10	2.00			
							25.00	sqm	139.00	3475.00
As per SOR Total Amount										Rs: 20217.45
Cost of 10 M long Drain										Rs: 20217.45
Cost per meter										2021.75
Total cost of 80 m length										161739.60
SAY										Rs. 162000.00

Assistant Engineer
Tribal Devp.
Raigarh (C.G.)

DETAILED ESTIMATE FOR 50 BED ASHRAM BHAVAN

FOR TRIBAL DEVELOPMENT DEPARTMENT
As per PWD Building SOR - 01.01.2015, and Road SOR - 01.01.2015

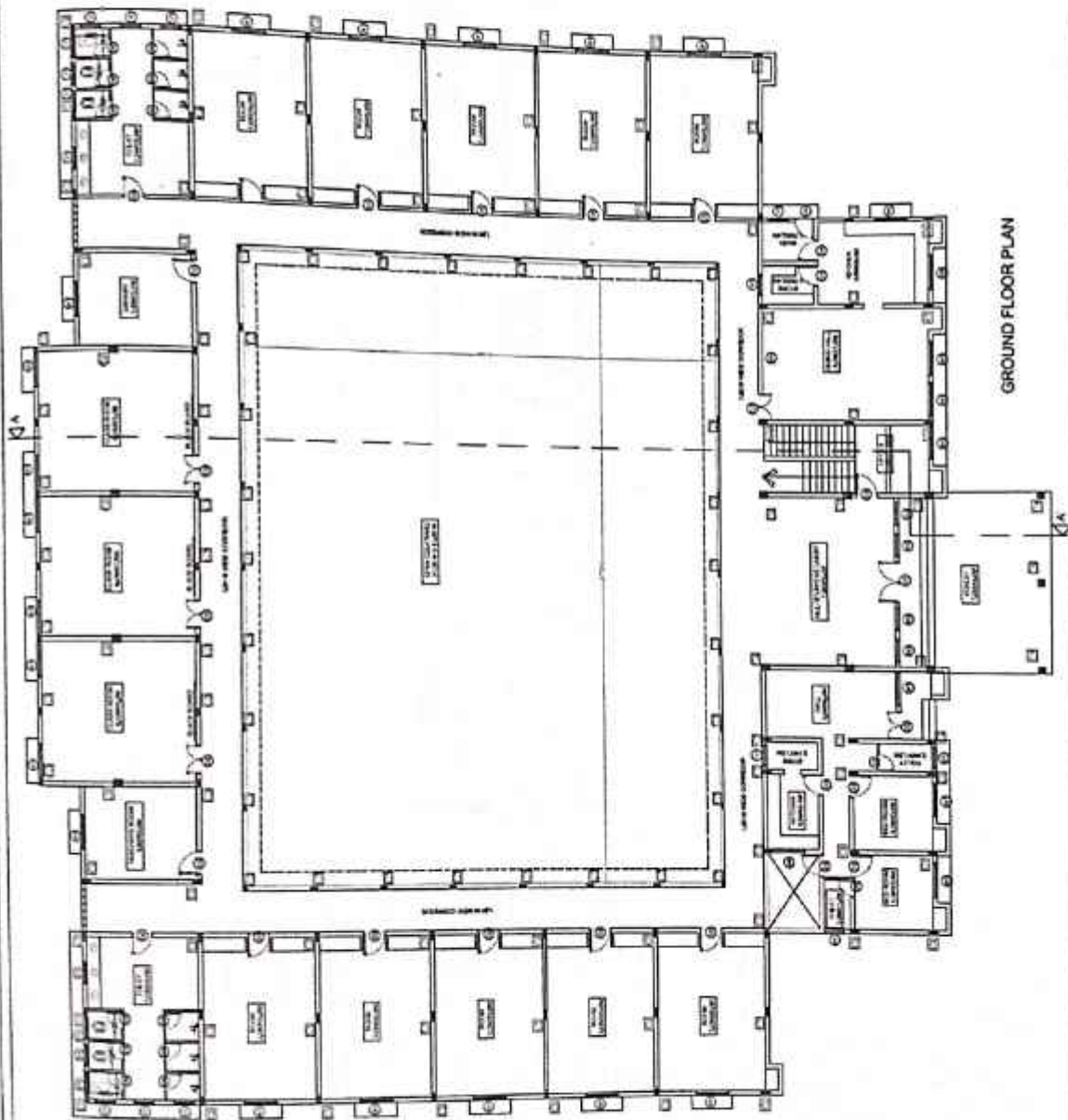
PAVED ENTRANCE

SN	REF	DESCRIPTION	NO	L	W	H/D	QTY	UNIT	RATE	AMOUNT
(ESTIMATE FOR STANDARD LENGTH OF 10 M)										
A :- Items as per Building SOR										
1	1.1	Excavation for all types and sizes of foundations, trenches and drains or for any other purpose including disposal of excavated stuff upto 1.5 m lift and load upto 50m (at least 5m away from the excavated area), including dressing and leveling of pits.								
	1	In all types of soils.								
		Side walls								
		Pathway	2	10.00	0.50	0.60	6.00			
			1	10.00	4.60	0.15	6.90			
							12.90	cum	185.00	2386.50
2	1.17	Filling from available excavated stuff (Excluding rock) in trenches, plinth, sides of foundation etc. in layers not exceeding 20cm in depth consolidating each deposited layer by ramming and watering with a lead upto 50 M. and lift upto 1.5 M.								
			2	10.00	0.15	0.45	1.35	cum	65.00	87.75
4	3.1	Providing and laying nominal mix plain cement concrete with crushed stone aggregate using concrete mixer in all works upto plinth level excluding cost of form work.								
	2	1:4:8 (1 cement : 4 coarse sand : 8 graded stone aggregate 40mm nominal size).								
	5	1:1½:3 (1 cement : 1½ coarse sand : 3 graded stone aggregate 20mm nominal size).	2	10.00	0.50	0.15	1.50	cum	2659.00	3988.50
		For coping on walls								
			2	10.00	0.20	0.05	0.20	cum	4073.00	814.60
5	7.5	Brick work with modular fly-ash lime bricks (FaLG Bricks) conforming to IS:12894-2002 of class designation 4.0 in foundation and plinth in:								
	4	Cement Mortar 1:6 (1 cement : 6 coarse sand)	2	10.00	0.20	1.00	4.00	cum	3263.00	13052.00
6	11.2	Providing and making 12mm thick cement plaster of mix:								
	11.2.4	In Cement Mortar 1:6 (1 cement : 6 fine sand)	2	10.00		0.55	11.00	sqm	91.50	1006.50
7	11.3	Providing and making 15mm thick cement plaster on the rough side of single or half brick wall of mix:								
	11.3.4	In Cement Mortar 1:6 (1 cement : 6 fine sand)	2	10.00		0.50	10.00	sqm	107.00	1070.00
8	14.15	Painting exterior surface with ACRYLIC SMOOTH exterior paint of required shade as per manufacturer's specifications to give protective and decorative finish including cleaning washing of surface etc. complete with:								
	14.15.1	On new work (Two or more coats applied @ 1.43 ltr/ 10 sqm over and including priming coat of exterior primer applied @ 2.20 kg/ 10 sqm)								
		External side	2	10.00		1.00	20.00	sqm	56.00	1120.00
9	12.65	Providing & laying 60mm thick precast interlocking concrete blocks of approved size (approx 305 sqcm) and shape/ pattern, over 40 mm thick average complete coarse sand bed with joints of 3mm thick filled by fine sand including leveling with surface vibrator, tamping and sweeping etc. complete of minimum compressive strength of 250 kg/sq.cm								
	12.65.1	Plain/ normal coloured precast interlock concrete block	1	10.00	4.60		46.00	sqm	436.00	20056.00

SN	REF	DESCRIPTION	NO	L	W	H/D	QTY	UNIT	RATE	AMOUNT
A = Total as per Building SOR									Rs.	43581.85
B :- Items as per Road SOR										
12	3.12	Construction of embankment with Material Obtained from Borrow Pits/Borrow Area (Construction of embankment with approved material/selected soil having C.B.R >5 (unless specified otherwise in the contract) obtained from borrow pits with all lifts and leads, transporting to site, spreading, grading to required slope and compacting to meet requirement of table 300-2) 1000mm wide x 500mm high. Average height = $1/2 \times 0.55 = 0.25$	2	10.00	2.00	0.50	20.00	Cum.	223.00	4460.00
1	4.1	Granular Sub-base as per Table:- 400-1								
		Construction of granular sub-base by providing graded Material, carriage of mixed Material to work site, spreading in uniform layers with motor grader on prepared surface watering, rolling and compacting with vibratory power roller at OMC to achieve the desired density, complete as per clause 401								
	B	By Mix in place method								
		Disintegrated rock i.e moorum having CBR value not less than 20 and P.I. and L.L. not more than 6 and 20 respectively. (For Village roads only)	1	10.00	4.60	0.60	27.60	Cum.	460.00	12696.00
B = Total as per Road SOR									Rs.	17156.00
Sub-Total (A + B)										60737.85
Cost of 10 M long Pathway									Rs:	60737.85
Cost per meter										6073.79
Total cost of 25 m length										151844.63
SAY									Rs.	152000.00


 Assistant Engineer
 Tribal Develp.
 Raigarh (C.C.)

PRODUCED BY AN AUTODESK EDUCATIONAL PRODUCT



GROUND FLOOR PLAN

PROPOSED 50 BEDED
ASHRAM BHAVAN

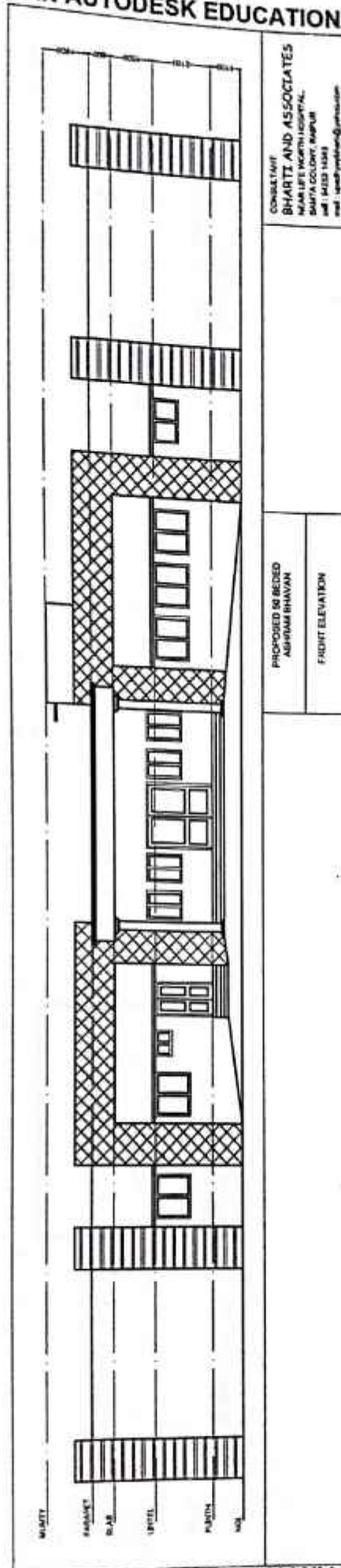
GROUND FLOOR PLAN

CONSULTANT :
BHARTI AND ASSOCIATES
NEAR LIFE WORTH HOSPITAL,
SAMTA COLONY, RAIPUR
cell : 94252 14343

PRODUCED BY AN AUTODESK EDUCATIONAL PRODUCT

PRODUCED BY AN AUTODESK EDUCATIONAL PRODUCT

PRODUCED BY AN AUTODESK EDUCATIONAL PRODUCT

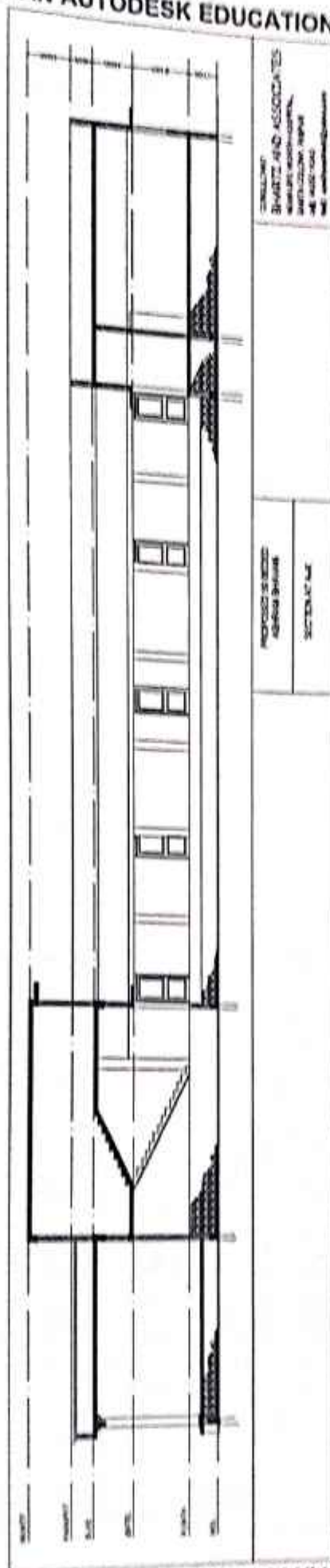


PRODUCED BY AN AUTODESK EDUCATIONAL PRODUCT

PRODUCED BY AN AUTODESK EDUCATIONAL PRODUCT

PRODUCED BY AN AUTODESK EDUCATIONAL PRODUCT

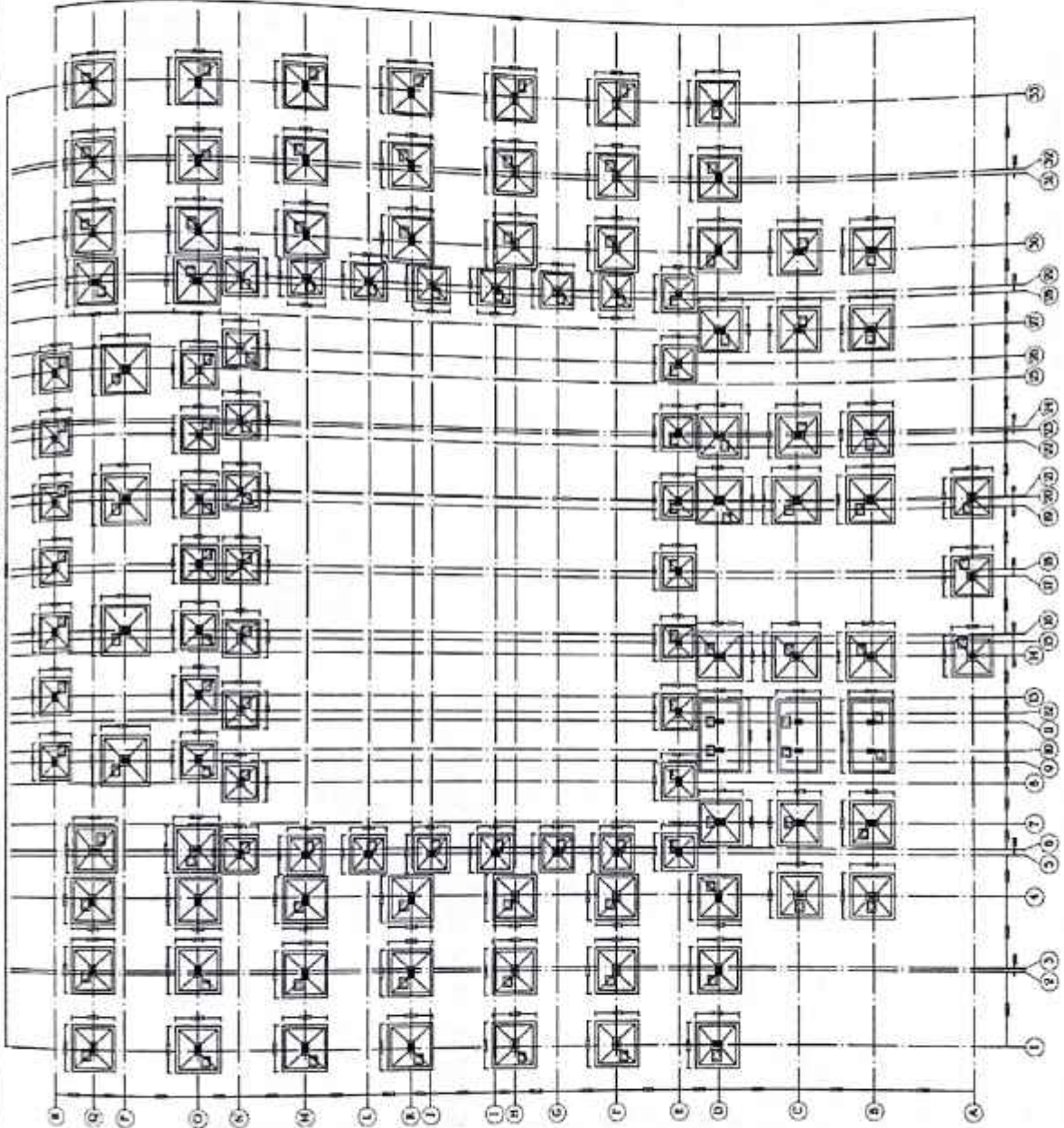
PRODUCED BY AN AUTODESK EDUCATIONAL PRODUCT



PRODUCED BY AN AUTODESK EDUCATIONAL PRODUCT

PRODUCED BY AN AUTODESK EDUCATIONAL PRODUCT

PRODUCED BY AN AUTODESK EDUCATIONAL PRODUCT



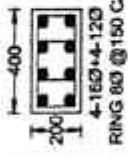
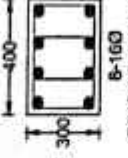

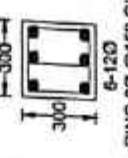
PROPOSED 50 BEDDED
ASHRAM BHAVAN

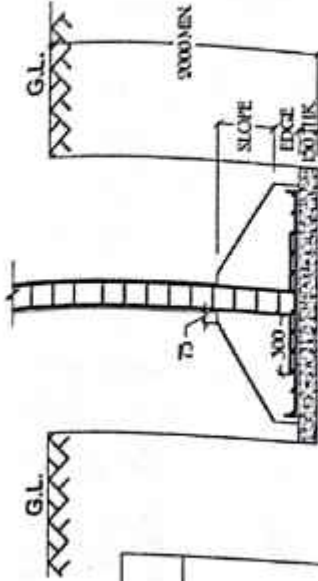
LAYOUT PLAN

PRODUCED BY AN AUTODESK EDUCATIONAL PRODUCT

PRODUCED BY AN AUTODESK EDUCATIONAL PRODUCT

COLUMN SCHEDULE

C1	C2	C3	C4
 4-16Ø @ 150 C/C 200 300	 8-16Ø @ 150 C/C 200 300	 8-12Ø @ 150 C/C 200 200	 8-12Ø @ 150 C/C 200 200



TYPICAL FOOTING SECTION

FOOTING SCHEDULE

FOOTING	EXCA. SIZE	FOOTING SIZE	EDGE	DEPTH	REINFORCEMENT	REMARK
F1	2200x2200	1900x1900	200	400	10Ø@150 C/C BOTHWAYS	C1
F2	2400x2400	2100x2100	200	400	10Ø@150 C/C BOTHWAYS	C2
F3	1800x1800	1500x1500	200	300	10Ø@150 C/C BOTHWAYS	C3
F4	2000x2000	1700x1700	200	300	10Ø@150 C/C BOTHWAYS	C4

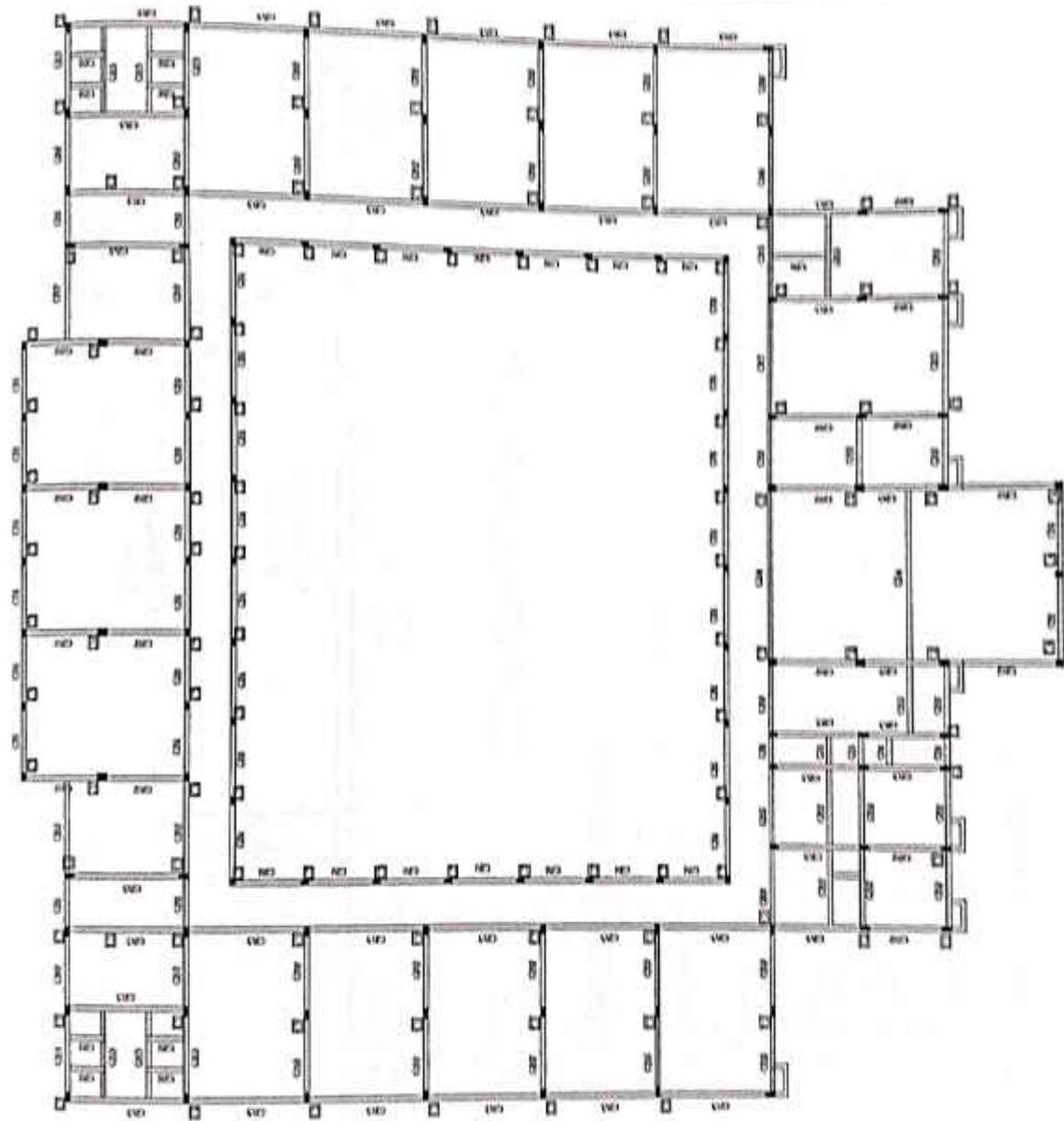
PROPOSED 50 BEDED
ASHRAM BHAVAN

COLUMN AND FOOTING SCHEDULE

PRODUCED BY AN AUTODESK EDUCATIONAL PRODUCT

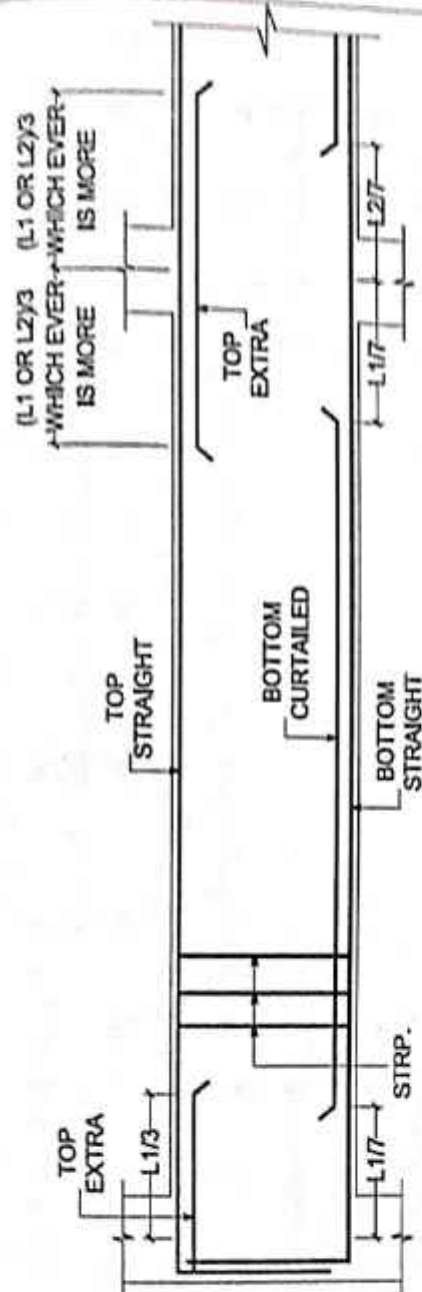
PRODUCED BY AN AUTODESK EDUCATIONAL PRODUCT

PROPOSED 50 BEDDED
ASH-RAM BHAVAN
GROUND BEAM PLAN



PRODUCED BY AN AUTODESK EDUCATIONAL PRODUCT

PRODUCED BY AN AUTODESK EDUCATIONAL PRODUCT



TYP. BEAM SECTION DETAIL

GROUND BEAM DETAIL

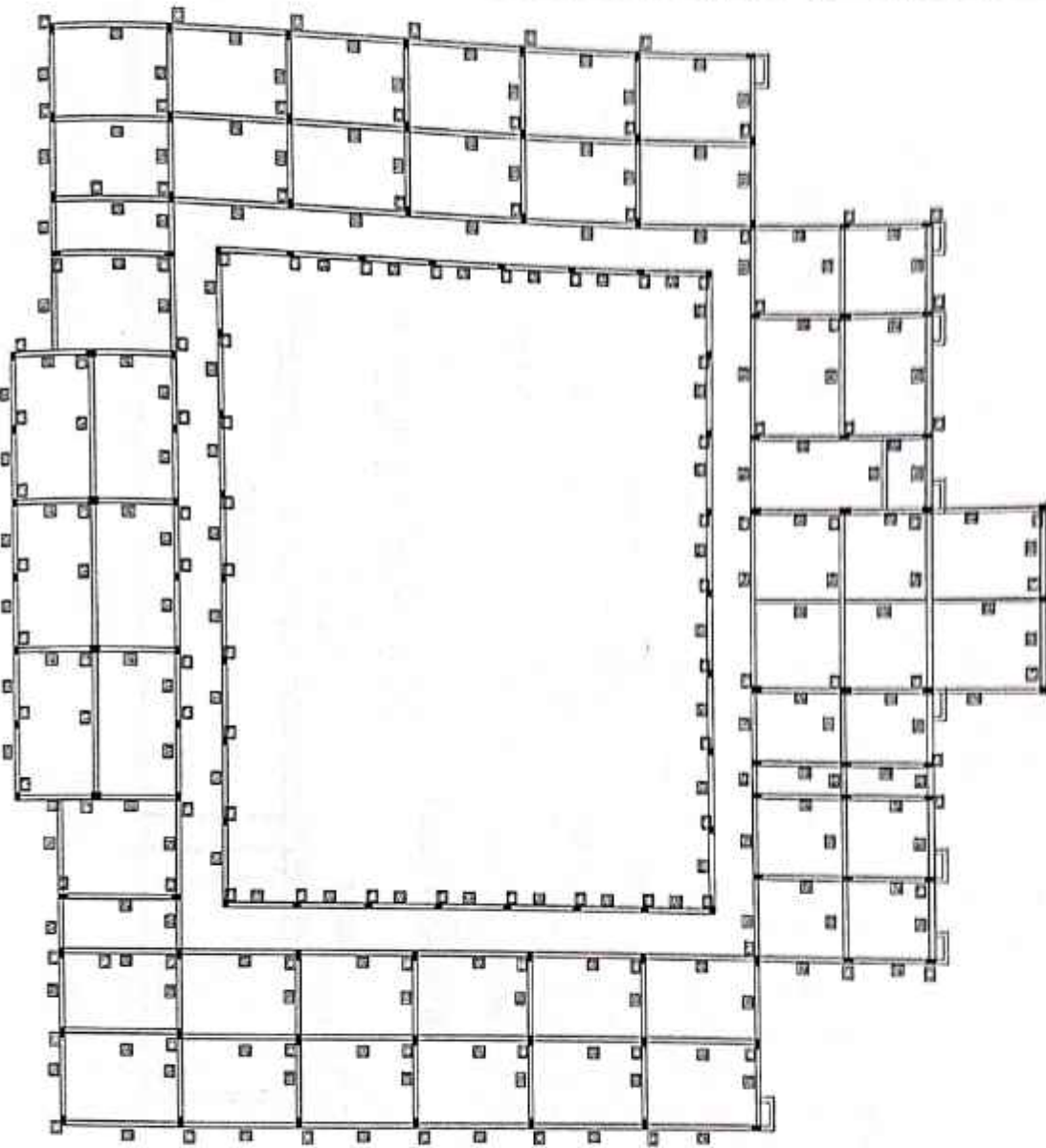
BEAM	SIZE	BOTTOM REIN.	TOP REIN.		STIRRUP
		STRAIGHT + CURTAIL	STRAIGHT	EXTRA	
GB1	200x300	2-12Ø	2-12Ø	—	8Ø @ 150 C/C
GB2	200x400	2-12Ø 2-16Ø	2-12Ø	2-12Ø	8Ø @ 150 C/C
GB3	200x450	2-12Ø 2-16Ø	2-12Ø	2-16Ø	8Ø @ 150 C/C
GB4	200x600	3-16Ø 2-16Ø	2-12Ø	2-16Ø	8Ø @ 150 C/C
GB5	200x650	3-12Ø 2-16Ø	2-12Ø	2-16Ø	8Ø @ 150 C/C

PROPOSED 50 SERIES
ASTM A601

GROUND BEAM SCHEDULE

PRODUCED BY AN AUTODESK EDUCATIONAL PRODUCT

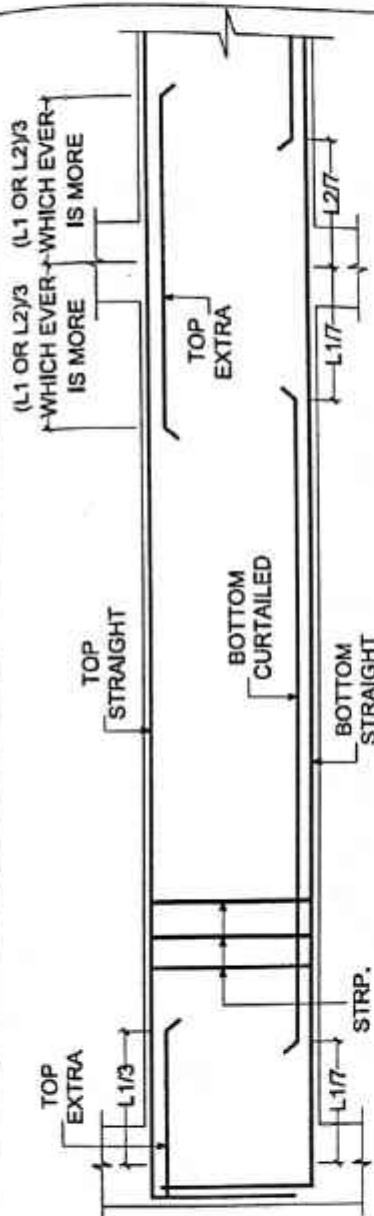
PRODUCED BY AN AUTODESK EDUCATIONAL PRODUCT



PROPOSED 50 BEDDED
ASHRAM BHAVAN
SLAB BEAM PLAN

PRODUCED BY AN AUTODESK EDUCATIONAL PRODUCT

PRODUCED BY AN AUTODESK EDUCATIONAL PRODUCT



TYP. BEAM SECTION DETAIL

SLAB BEAM DETAIL

BEAM	SIZE	BOTTOM REIN. STRAIGHT + CURTAIL	TOP REIN.		STIRRUP
			STRAIGHT	EXTRA	
B1	200x400	2-12Ø 2-12Ø	2-12Ø	3-12Ø	8Ø @ 150 C/C
B2	200x450	2-12Ø 3-16Ø	2-12Ø	3-16Ø	8Ø @ 130 C/C
B3	200x500	3-16Ø 3-16Ø	2-16Ø	3-16Ø	8Ø @ 100 C/C
B4	200x600	3-16Ø 4-16Ø	2-16Ø	4-16Ø	8Ø @ 150 C/C
B5	200x300	3-12Ø	3-12Ø	---	8Ø @ 150 C/C

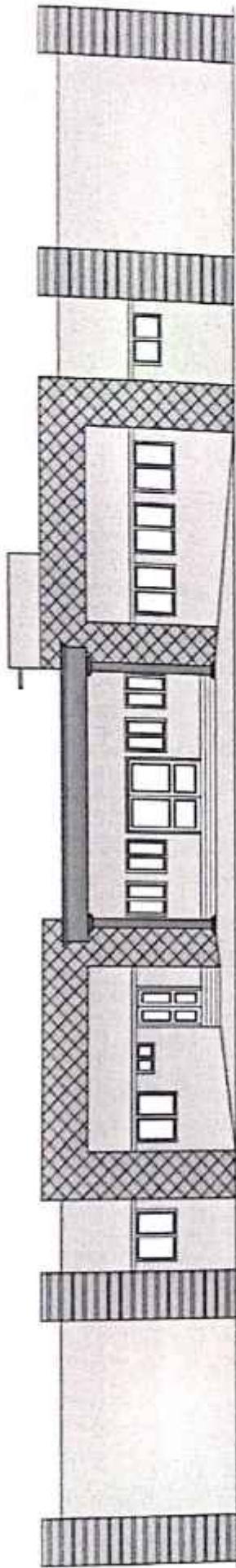
DETAILS OF SLAB

SLAB	MAIN SPAN	OTHER SPAN	SLAB THICKNESS
S1	8Ø @ 125 C/C	8Ø @ 125 C/C	125 MM
S2	10Ø @ 125 C/C	10Ø @ 125 C/C	150MM

PRODUCED BY AN AUTODESK EDUCATIONAL PRODUCT

PROPOSED 50 BEDED
ASHRAM BHAVAN

SLAB BEAM SCHEDULE



PROPOSED ASHRAM BHAVAN
FOR DEPTT. OF TRIBAL DEVELOPMENT, RAIPUR, C. G.